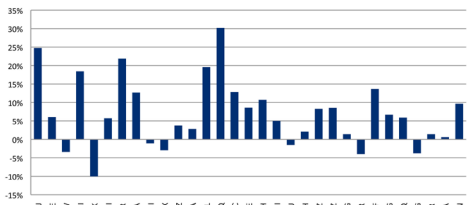
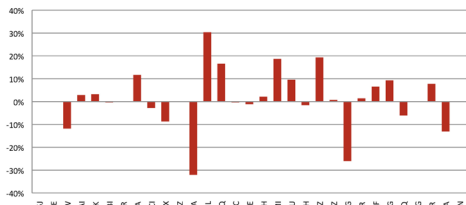


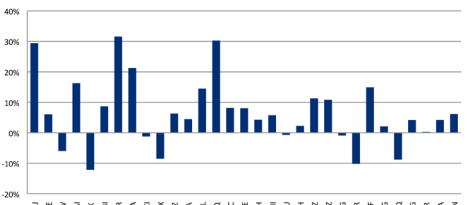
PAX: Year-on-year % change by carrier
October 2014 vs. October 2013



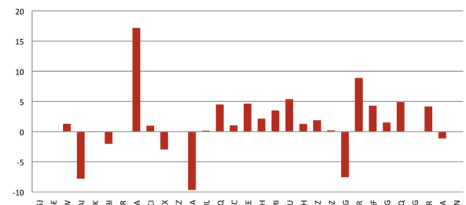
FTK: Year-on-year % change by carrier
October 2014 vs. October 2013



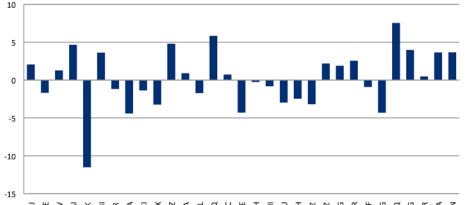
RPK: Year-on-year % change by carrier
October 2014 vs. October 2013



Freight Load Factor: Year-on-year percentage-point change by carrier
October 2014 vs. October 2013



Passenger Load Factor: Year-on-year percentage-point change by carrier
October 2014 vs. October 2013

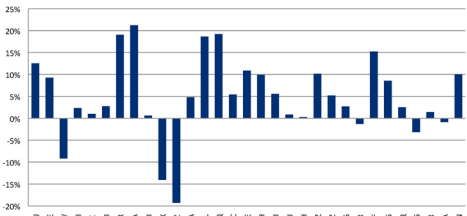


Airline Codes

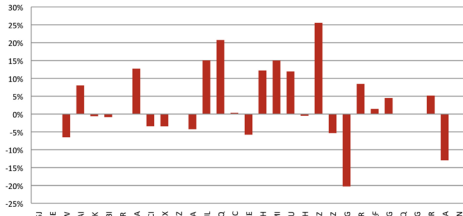
5J	CEBU Pacific Air	MH	Malaysia Airlines
6E	IndiGo Airlines	MI	SilkAir
9W	Jet Airways	MU	China Eastern Airlines
AI	Air India	NH	All Nippon Airways
AK	AirAsia	NZ	Air New Zealand
BI	Royal Brunei Airlines	OZ	Asiana Airlines
BR	EVA Air	PG	Bangkok Airways
CA	Air China	PR	Philippine Airlines
CI	China Airlines	QF	Qantas Airways
CX	Cathay Pacific	SG	Spicejet
CZ	China Southern Airlines	SQ	Singapore Airlines
GA	Garuda	TG	Thai Airways Int'l
JL	Japan Airlines	TR	Tigerair
JQ	Jetstar Airways	VA	Virgin Australia
KE	Korean Airlines	VN	Vietnam Airlines

Note: CX includes KA, VA includes TT

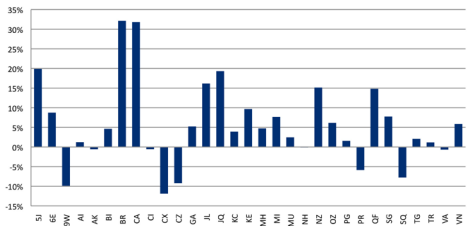
PAX: Year-on-year % change by carrier
Jan - Oct 2014 vs Jan - Oct 2013



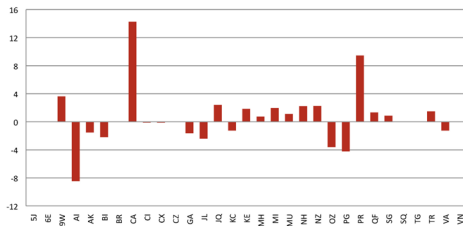
FTK: Year-on-year % change by carrier
Jan - Oct 2014 vs. Jan - Oct 2013



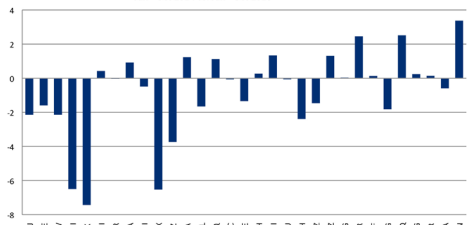
RPK: Year-on-year % change by carrier
Jan - Oct 2014 vs. Jan - Oct 2013



Freight Load Factor: Year-on-year percentage-point change by carrier
Jan - Oct 2014 vs. Jan - Oct 2013



Passenger Load Factor: Year-on-year percentage-point change by carrier
Jan - Oct 2014 vs. Jan - Oct 2013

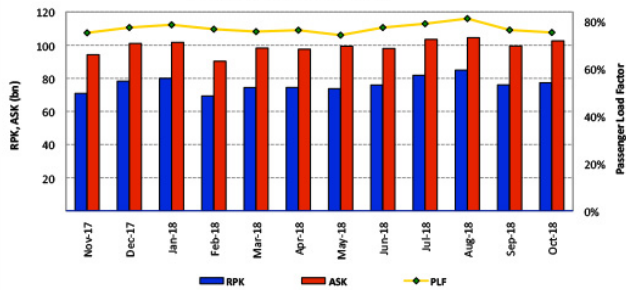


Airline Codes

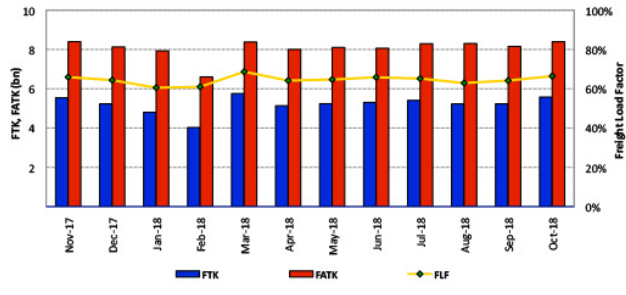
5J	CEBU Pacific Air	MH	Malaysia Airlines
6E	IndiGo Airlines	MI	SilkAir
9W	Jet Airways	MU	China Eastern Airlines
AI	Air India	NH	All Nippon Airways
AK	AirAsia	NZ	Air New Zealand
BI	Royal Brunei Airlines	OZ	Asiana Airlines
BR	EVA Air	PG	Bangkok Airways
CA	Air China	PR	Philippine Airlines
CI	China Airlines	QF	Qantas Airways
CX	Cathay Pacific	SG	Spicejet
CZ	China Southern Airlines	SQ	Singapore Airlines
GA	Garuda	TG	Thai Airways Int'l
JL	Japan Airlines	TR	Tigerair
JQ	Jetstar Airways	VA	Virgin Australia
KE	Korean Airlines	VN	Vietnam Airlines

Note: CX includes KA, VA includes TT

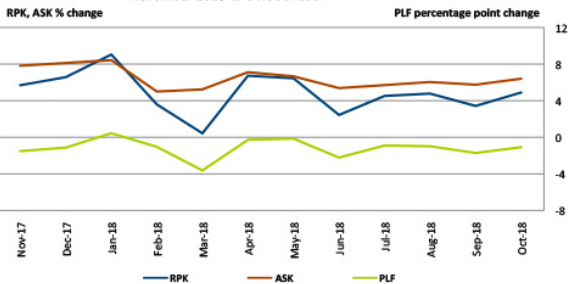
**Asia Pacific International Passenger Traffic Trends
November 2013 to October 2014**



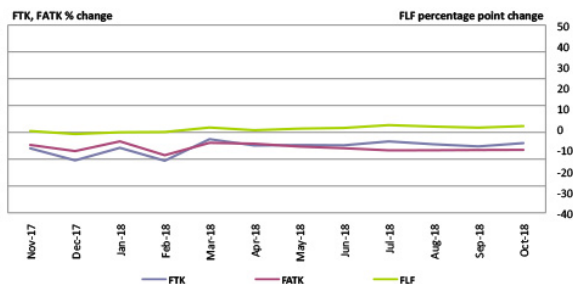
**Asia Pacific International Freight Traffic Trends
November 2013 to October 2014**



**Asia Pacific International Passenger Traffic Growth Trends
November 2013 to October 2014**



**Asia Pacific International Freight Traffic Growth Trends
November 2013 to October 2014**



TRAFFIC UPDATE – PRELIMINARY INTERNATIONAL SCHEDULED SERVICES OF ASIA-PACIFIC AIRLINES

International	Nov-14	Nov-13	% Change	Jan-Nov 2014	Jan-Nov 2013	% Change
Passengers (000)	21,075	19,984	+ 5.5%	233,036	222,752	+ 4.6%
RPK (mn.)	73,589	70,891	+ 3.8%	841,607	805,047	+ 4.5%
ASK (mn.)	98,351	94,249	+ 4.4%	1,093,798	1,031,798	+ 6.0%
Passenger Load Factor	74.8%	75.2%	- 0.4 pp	76.9%	78.0%	- 1.1 pp
FTK (mn.)	5,846	5,538	+ 5.6%	57,544	54,729	+ 5.1%
FATK (mn.)	8,559	8,399	+ 1.9%	88,784	85,354	+ 4.0%
Freight Load Factor	68.3%	65.9%	+ 2.4 pp	64.8%	64.1%	+ 0.7 pp

- Aggregated traffic data for 30 Asia Pacific based carriers*
- Previous year data adjusted for comparison purposes
- RPK = revenue passenger kilometres
- ASK = available seat kilometres

- FTK = freight tonne kilometres
- FATK = available freight tonne kilometres
- All figures, including estimates for missing data, are provisional

* Effective January 2014, the enlarged dataset comprises aggregated traffic data for the following 30 Asia Pacific based airlines: 5J, 6E, 9W, AI, AK, BI, BR, CA, CI, CX, CZ, GA, JL, JO, KA, KE, MH, MU, NH, NZ, OZ, PG, PR, SG, SO, TG, TR, QF, VA and VN.
Prior year comparisons have been adjusted accordingly.

AAPA MONTHLY INTERNATIONAL STATISTICS

Summary of Consolidated Results (thousands)

2013/14	PAX	RPK	ASK	PLF	FTK	FATK	FLF	RTK	ATK	OLF
Nov-13	19,984	70,890,718	94,248,728	75.22%	5,537,860	8,399,187	65.93%	12,047,979	17,092,120	70.49%
Dec-13	21,566	78,283,994	101,068,856	77.46%	5,231,563	8,128,136	64.36%	12,381,847	17,549,751	70.55%
Jan-14	21,418	79,965,034	101,722,847	78.61%	4,799,448	7,930,744	60.52%	12,117,231	17,446,813	69.45%
Feb-14	19,515	69,318,917	90,298,261	76.77%	4,026,973	6,603,904	60.98%	10,376,987	15,062,552	68.89%
Mar-14	20,975	74,427,171	98,279,061	75.73%	5,753,306	8,378,776	68.67%	12,595,598	17,547,284	71.78%
Apr-14	20,997	74,489,867	97,583,870	76.33%	5,133,288	7,998,665	64.18%	11,945,652	17,099,079	69.86%
May-14	20,441	73,742,585	99,343,550	74.23%	5,240,243	8,103,162	64.67%	12,055,737	17,366,332	69.42%
Jun-14	20,663	75,934,544	98,042,459	77.45%	5,304,536	8,059,838	65.81%	12,264,276	17,196,106	71.32%
Jul-14	22,181	81,843,060	103,508,670	79.07%	5,406,229	8,294,855	65.18%	12,831,066	17,910,632	71.64%
Aug-14	23,231	84,934,575	104,549,213	81.24%	5,226,271	8,304,951	62.93%	12,951,721	18,060,433	71.71%
Sep-14	20,746	76,021,854	99,497,449	76.41%	5,231,857	8,155,477	64.15%	12,172,402	17,438,092	69.80%
Oct-14	21,794	77,341,201	102,622,133	75.37%	5,576,114	8,394,356	66.43%	12,636,492	17,969,726	70.32%
TOTAL	253,511	917,193,521	1,190,765,098	77.03%	62,467,687	96,752,052	64.56%	146,376,988	207,738,920	70.46%

2013/14	PAX	RPK	ASK	PLF	FTK	FATK	FLF	RTK	ATK	OLF
Nov-13	7.4%	5.7%	7.8%	-1.5	4.0%	5.3%	-0.8	4.8%	6.3%	-1.0
Dec-13	6.9%	6.6%	8.1%	-1.1	-0.4%	3.0%	-2.2	3.3%	6.1%	-1.9
Jan-14	9.5%	9.0%	8.4%	0.4	4.2%	6.6%	-1.4	6.8%	8.0%	-0.8
Feb-14	3.3%	3.6%	5.0%	-1.0	-0.6%	1.5%	-1.3	1.8%	4.1%	-1.5
Mar-14	1.0%	0.4%	5.2%	-3.6	7.5%	6.1%	0.9	3.5%	6.1%	-1.8
Apr-14	6.7%	6.7%	7.1%	-0.3	5.1%	5.8%	-0.4	5.6%	7.3%	-1.1
May-14	6.8%	6.4%	6.7%	-0.1	5.3%	4.7%	0.3	6.0%	6.4%	-0.3
Jun-14	1.6%	2.4%	5.4%	-2.2	5.2%	4.1%	0.7	3.5%	5.4%	-1.3
Jul-14	4.0%	4.5%	5.7%	-0.9	6.6%	3.3%	2.0	4.9%	5.0%	-0.1
Aug-14	3.8%	4.8%	6.0%	-1.0	5.6%	3.3%	1.3	4.9%	5.4%	-0.4
Sep-14	3.0%	3.4%	5.7%	-1.7	4.8%	3.4%	0.8	3.9%	5.2%	-0.9
Oct-14	6.1%	4.9%	6.4%	-1.1	6.0%	3.5%	1.6	5.1%	5.6%	-0.4
GROWTH	5.0%	4.9%	6.5%	-1.2	4.5%	4.2%	0.2	4.5%	5.9%	-0.9

Percentage or Percentage Point Change

CY	PAX	RPK	ASK	PLF	FTK	FATK	FLF	RTK	ATK	OLF
2009	176,548	678,862,490	913,265,605	74.33%	53,025,040	82,881,494	63.98%	116,760,215	168,508,544	69.29%
2010	199,719	748,329,072	956,502,440	78.24%	65,797,161	95,557,237	68.86%	135,496,828	184,786,039	73.33%
2011	208,573	779,722,979	1,020,828,321	76.38%	62,791,788	95,826,950	65.53%	134,687,947	190,626,840	70.66%
2012	225,253	826,623,131	1,060,237,125	77.97%	60,635,399	92,545,454	65.52%	136,598,247	191,260,306	71.42%
2013	244,319	883,331,064	1,132,866,760	77.97%	59,960,856	93,481,688	64.14%	141,001,131	198,158,580	71.16%

CY	PAX	RPK	ASK	PLF	FTK	FATK	FLF	RTK	ATK	OLF
2010	13.1%	10.2%	4.7%	3.9	24.1%	15.3%	4.9	16.0%	9.7%	4.0
2011	4.4%	4.2%	6.7%	-1.9	-4.6%	0.3%	-3.3	-0.6%	3.2%	-2.7
2012	8.0%	6.0%	3.9%	1.6	-3.4%	-3.4%	0.0	1.4%	0.3%	0.8
2013	8.5%	6.9%	6.9%	0.0	-1.1%	1.0%	-1.4	3.2%	3.6%	-0.3

Percentage or Percentage Point Change

Note:

*2009-2010 data consolidated from 29 carriers based in the region: 5J, 6E, 9W, AI, AK, BI, BR, CA, CI, CX, CZ, GA, JL, JQ, KA, KE, MH, MU, NH, NZ, OZ, PR, QF, SG, SQ, TG, TR, VA and VN

*Data from 2011 consolidated from 30 carriers based in the region: 5J, 6E, 9W, AI, AK, BI, BR, CA, CI, CX, CZ, GA, JL, JQ, KA, KE, MH, MU, NH, NZ, OZ, PG, PR, SG, SQ, TG, TR, OF, VA and VN