

Airline Codes

5J	CEBU Pacific Air	MH	Malaysia Airlines
6E	IndiGo Airlines	MI	SilkAir
9W	Jet Airways	MU	China Eastern Airlines
AI	Air India	NH	All Nippon Airways
AK	AirAsia	NZ	Air New Zealand
BI	Royal Brunei Airlines	OZ	Asiana Airlines
BR	EVA Air	PG	Bangkok Airways
CA	Air China	PR	Philippine Airlines
CI	China Airlines	QF	Qantas Airways
CX	Cathay Pacific	SG	Spicejet
CZ	China Southern Airlines	SQ	Singapore Airlines
GA	Garuda	TG	Thai Airways Int'l
JL	Japan Airlines	TR	Tigerair
JQ	Jetstar Airways	VA	Virgin Australia
KC	Air Astana	VN	Vietnam Airlines
KE	Korean Airlines		

Percentage
(Nov 13 vs Nov 14)

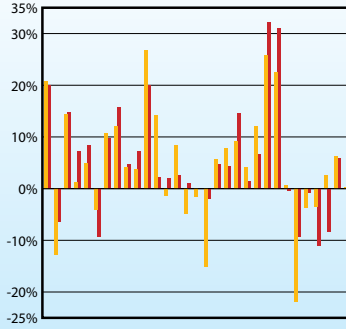
Percentage Points Change
(Nov 13 vs Nov 14)

Percentage
(Jan-Nov 13 vs Jan-Nov 14)

Percentage Points Change
(Jan-Nov 13 vs Jan-Nov 14)

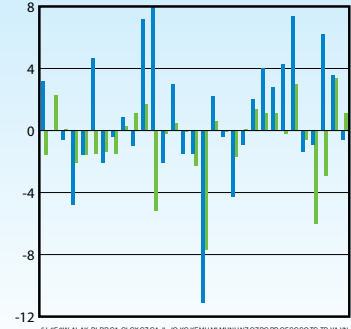
Note: CX includes KA, VA includes TT

RPK Growth by Carrier



SJ KE 9W AI AK BI BR CA CI CX CZ GA JL JO KC KE MH MI MU NH NZ OZ PG PR QF SG SQ TG TR VA VN

Passenger Load Factor Growth by Carrier



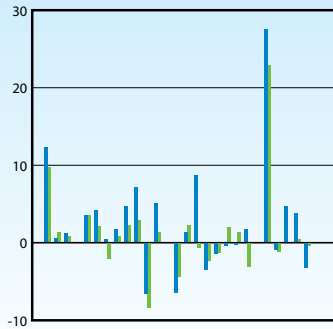
SJ KE 9W AI AK BI BR CA CI CX CZ GA JL JO KC KE MH MI MU NH NZ OZ PG PR QF SG SQ TG TR VA VN

FTK Growth by Carrier



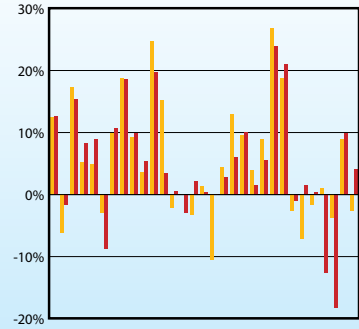
SJ KE 9W AI AK BI BR CA CI CX CZ GA JL JO KC KE MH MI MU NH NZ OZ PG PR QF SG SQ TG TR VA VN

Freight Load Factor Growth by Carrier



SJ KE 9W AI AK BI BR CA CI CX CZ GA JL JO KC KE MH MI MU NH NZ OZ PG PR QF SG SQ TG TR VA VN

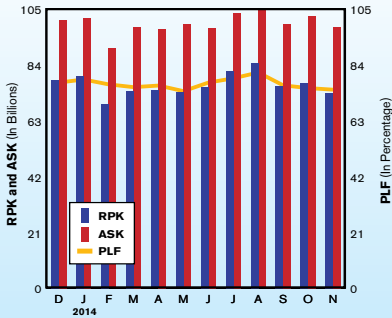
PAX Growth by Carrier



SJ KE 9W AI AK BI BR CA CI CX CZ GA JL JO KC KE MH MI MU NH NZ OZ PG PR QF SG SQ TG TR VA VN

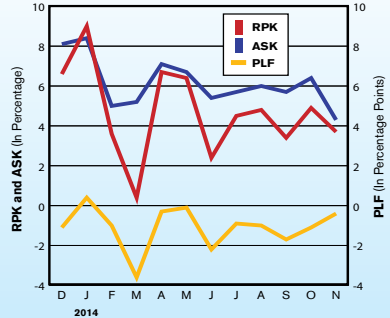
RPK, ASK and PLF

(Dec 13 to Nov 14)



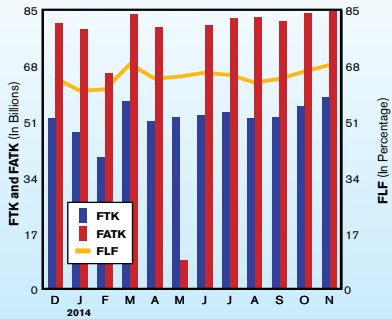
RPK, ASK and PLF Growth Rates

(Dec 13 to Nov 14)



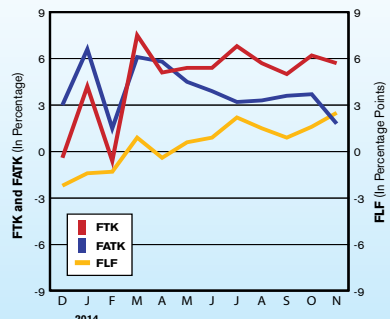
FTK, FATK and Freight Load Factor

(Dec 13 to Nov 14)



FTK, FATK and FLF Growth Rates

(Dec 13 to Nov 14)



TRAFFIC UPDATE – PRELIMINARY

INTERNATIONAL SCHEDULED SERVICES OF ASIA-PACIFIC AIRLINES

International	Dec-14	Dec-13	% Change	Jan-Dec 2014	Jan-Dec 2013	% Change
Passengers (000)	23,108	21,566	+ 7.2%	256,127	244,319	+ 4.8%
RPK (mn.)	83,193	78,284	+ 6.3%	924,695	883,331	+ 4.7%
ASK (mn.)	106,830	101,069	+ 5.7%	1,200,568	1,132,867	+ 6.0%
Passenger Load Factor	77.9%	77.5%	+ 0.4 pp	77.0%	78.0%	- 1.0 pp
FTK (mn.)	5,572	5,232	+ 6.5%	63,178	59,961	+ 5.4%
FATK (mn.)	8,511	8,128	+ 4.7%	97,278	93,482	+ 4.1%
Freight Load Factor	65.5%	64.4%	+ 1.1 pp	64.9%	64.1%	+ 0.8 pp

- Effective September 2014, the dataset comprises aggregated traffic data from the following 31 Asia Pacific based carriers: 5J, 6E, 9W, AI, AK, BI, BR, CA, CI, CX, CZ, GA, JL, JQ, KA, KC, KE, MH, MU, NH, NZ, OZ, PG, PR, SG, SQ, TG, TR, QF, VA and VN.
- Previous year data adjusted for comparison purposes

- RPK = revenue passenger kilometres
- ASK = available seat kilometres
- FTK = freight tonne kilometres
- FATK = available freight tonne kilometres
- All figures, including estimates for missing data, are provisional

AAPA MONTHLY INTERNATIONAL STATISTICS

Summary of Consolidated Results (thousands)

2013/14	PAX	RPK	ASK	PLF	FTK	FATK	FLF	RTK	ATK	OLF
Dec-13	21,566	78,283,994	101,068,856	77.46%	5,231,563	8,128,136	64.36%	12,381,847	17,549,751	70.55%
Jan-14	21,418	79,965,034	101,722,847	78.61%	4,799,448	7,930,744	60.52%	12,117,231	17,446,813	69.45%
Feb-14	19,515	69,318,917	90,298,261	76.77%	4,026,973	6,603,904	60.98%	10,376,987	15,062,552	68.89%
Mar-14	20,975	74,427,171	98,279,061	75.73%	5,753,306	8,378,776	68.67%	12,595,598	17,547,284	71.78%
Apr-14	20,997	74,489,867	97,583,870	76.33%	5,133,288	7,998,665	64.18%	11,945,652	17,099,079	69.86%
May-14	20,441	73,742,585	99,343,550	74.23%	5,245,700	8,084,419	64.89%	12,055,737	17,366,332	69.42%
Jun-14	20,663	75,934,544	98,042,459	77.45%	5,313,956	8,047,862	66.03%	12,264,276	17,196,106	71.32%
Jul-14	22,189	81,841,423	103,514,082	79.06%	5,414,374	8,285,068	65.35%	12,830,914	17,911,136	71.64%
Aug-14	23,241	84,933,960	104,550,798	81.24%	5,234,917	8,301,591	63.06%	12,951,664	18,060,581	71.71%
Sep-14	20,756	76,024,965	99,491,045	76.41%	5,243,405	8,167,940	64.19%	12,172,691	17,437,497	69.81%
Oct-14	21,804	77,348,027	102,608,653	75.38%	5,589,267	8,413,418	66.43%	12,637,127	17,968,472	70.33%
Nov-14	21,066	73,480,389	98,262,835	74.78%	5,851,728	8,554,414	68.41%	12,563,919	17,724,164	70.89%
TOTAL	254,630	919,790,876	1,194,766,317	76.99%	62,837,924	96,894,938	64.85%	146,893,643	208,369,766	70.50%

2013/14	PAX	RPK	ASK	PLF	FTK	FATK	FLF	RTK	ATK	OLF
Dec-13	6.9%	6.6%	8.1%	-1.1	-0.4%	3.0%	-2.2	3.3%	6.1%	-1.9
Jan-14	9.5%	9.0%	8.4%	0.4	4.2%	6.6%	-1.4	6.8%	8.0%	-0.8
Feb-14	3.3%	3.6%	5.0%	-1.0	-0.6%	1.5%	-1.3	1.8%	4.1%	-1.5
Mar-14	1.0%	0.4%	5.2%	-3.6	7.5%	6.1%	0.9	3.5%	6.1%	-1.8
Apr-14	6.7%	6.7%	7.1%	-0.3	5.1%	5.8%	-0.4	5.6%	7.3%	-1.1
May-14	6.8%	6.4%	6.7%	-0.1	5.4%	4.5%	0.6	6.0%	6.4%	-0.3
Jun-14	1.6%	2.4%	5.4%	-2.2	5.4%	3.9%	0.9	3.5%	5.4%	-1.3
Jul-14	4.0%	4.5%	5.7%	-0.9	6.8%	3.2%	2.2	4.9%	5.0%	-0.1
Aug-14	3.8%	4.8%	6.0%	-1.0	5.7%	3.3%	1.5	4.9%	5.4%	-0.4
Sep-14	3.1%	3.4%	5.7%	-1.7	5.0%	3.6%	0.9	3.9%	5.2%	-0.9
Oct-14	6.2%	4.9%	6.4%	-1.1	6.2%	3.7%	1.6	5.1%	5.6%	-0.4
Oct-14	5.4%	3.7%	4.3%	-0.4	5.7%	1.8%	2.5	4.3%	3.7%	0.4
GROWTH	4.8%	4.7%	6.2%	-1.1	4.8%	3.9%	0.5	4.5%	5.7%	-0.8

Percentage or Percentage Point Change

CY	PAX	RPK	ASK	PLF	FTK	FATK	FLF	RTK	ATK	OLF
2009	176,548	678,862,490	913,265,605	74.33%	53,025,040	82,881,494	63.98%	116,760,215	168,508,544	69.29%
2010	199,719	748,329,072	956,502,440	78.24%	65,797,161	95,557,237	68.86%	135,496,828	184,786,039	73.33%
2011	208,573	779,722,979	1,020,828,321	76.38%	62,791,788	95,826,950	65.53%	134,687,947	190,626,840	70.66%
2012	225,253	826,623,131	1,060,237,125	77.97%	60,635,399	92,545,454	65.52%	136,598,247	191,260,306	71.42%
2013	244,319	883,331,064	1,132,866,760	77.97%	59,960,856	93,481,688	64.14%	141,001,131	198,158,580	71.16%

CY	PAX	RPK	ASK	PLF	FTK	FATK	FLF	RTK	ATK	OLF
2010	13.1%	10.2%	4.7%	3.9	24.1%	15.3%	4.9	16.0%	9.7%	4.0
2011	4.4%	4.2%	6.7%	-1.9	-4.6%	0.3%	-3.3	-0.6%	3.2%	-2.7
2012	8.0%	6.0%	3.9%	1.6	-3.4%	-3.4%	0.0	1.4%	0.3%	0.8
2013	8.5%	6.9%	6.9%	0.0	-1.1%	1.0%	-1.4	3.2%	3.6%	-0.3

Percentage or Percentage Point Change

Note:

- 2009-2010 data consolidated from 29 carriers based in the region: 5J, 6E, 9W, AI, AK, BI, BR, CA, CI, CX, CZ, GA, JL, JQ, KA, KE, MH, MU, NH, NZ, OZ, PR, QF, SG, SQ, TG, TR, VA and VN
- 2011-2012 data consolidated from 30 carriers based in the region: 5J, 6E, 9W, AI, AK, BI, BR, CA, CI, CX, CZ, GA, JL, JQ, KA, KE, MH, MU, NH, NZ, OZ, PG, PR, SG, SQ, TG, TR, QF, VA and VN
- Data from 2013 consolidated from 31 carriers based in the region: 5J, 6E, 9W, AI, AK, BI, BR, CA, CI, CX, CZ, GA, JL, JQ, KA, KC, KE, MH, MU, NH, NZ, OZ, PG, PR, SG, SQ, TG, TR, QF, VA and VN
- Historical data from Jan 2013 was revised to include KC