

Airline Codes

SJ	CEBU Pacific Air	MH	Malaysia Airlines
6E	IndiGo Airlines	MI	SilkAir
9W	Jet Airways	MU	China Eastern Airlines
AI	Air India	NH	All Nippon Airways
AK	AirAsia	NZ	Air New Zealand
BI	Royal Brunei Airlines	OZ	Asiana Airlines
BR	EVA Air	PG	Bangkok Airways
CA	Air China	PR	Philippine Airlines
CI	China Airlines	QF	Qantas Airways
CX	Cathay Pacific	SG	Spicejet
CZ	China Southern Airlines	SQ	Singapore Airlines
GA	Garuda	TG	Thai Airways Int'l
JL	Japan Airlines	TR	Tigerair
JQ	Jetstar Airways	VA	Virgin Australia
KC	Air Astana	VN	Vietnam Airlines
KE	Korean Airlines		

Percentage
(Nov 13 vs Nov 14)

Percentage Points Change
(Nov 13 vs Nov 14)

Percentage
(Jan-Nov 13 vs Jan-Nov 14)

Percentage Points Change
(Jan-Nov 13 vs Jan-Nov 14)

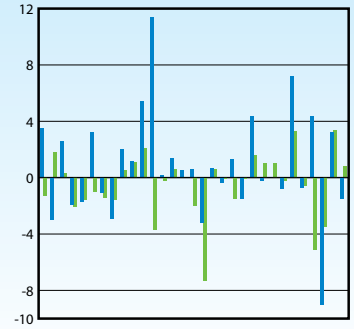
Note: CX includes KA, VA includes TT

RPK Growth by Carrier



SJ 6E 9W AI AK BI BR CA CI CX CZ GA JL JQ KC KEMH MI MUNHNZ OZ PG PR QF SGO TO TR VA VN

Passenger Load Factor Growth by Carrier



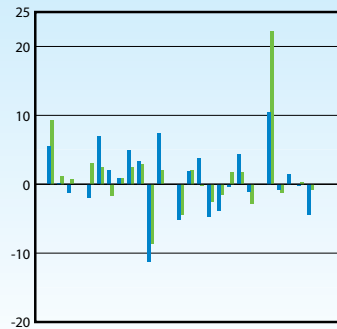
SJ 6E 9W AI AK BI BR CA CI CX CZ GA JL JQ KC KEMH MI MUNHNZ OZ PG PR QF SGO TO TR VA VN

FTK Growth by Carrier



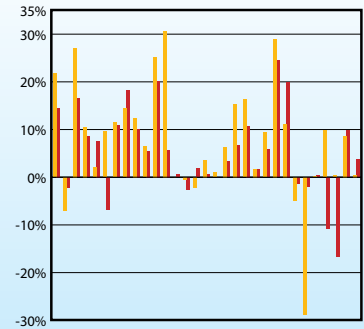
SJ 6E 9W AI AK BI BR CA CI CX CZ GA JL JQ KC KEMH MI MUNHNZ OZ PG PR QF SGO TO TR VA VN

Freight Load Factor Growth by Carrier



SJ 6E 9W AI AK BI BR CA CI CX CZ GA JL JQ KC KEMH MI MUNHNZ OZ PG PR QF SGO TO TR VA VN

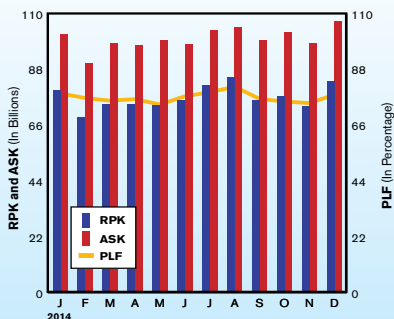
PAX Growth by Carrier



SJ 6E 9W AI AK BI BR CA CI CX CZ GA JL JQ KC KEMH MI MUNHNZ OZ PG PR QF SGO TO TR VA VN

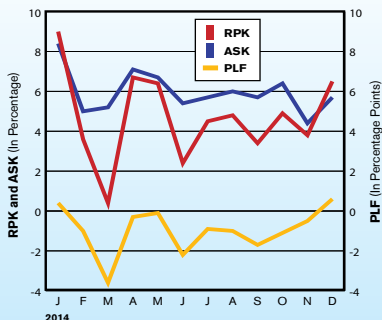
RPK, ASK and PLF

(Jan 14 to Dec 14)



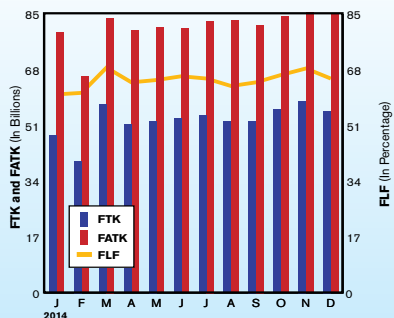
RPK, ASK and PLF Growth Rates

(Jan 14 to Dec 14)



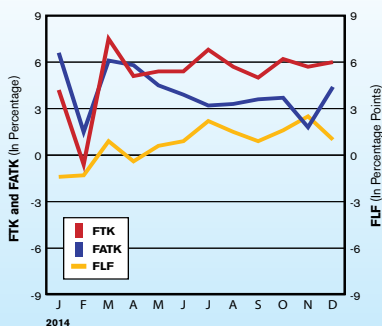
FTK, FATK and Freight Load Factor

(Jan 14 to Dec 14)



FTK, FATK and FLF Growth Rates

(Jan 14 to Dec 14)



TRAFFIC UPDATE – PRELIMINARY

INTERNATIONAL SCHEDULED SERVICES OF ASIA-PACIFIC AIRLINES

International	Jan-15	Jan-14	% Change
Passengers (000)	22,409	21,418	+ 4.6%
RPK (mn.)	83,076	79,965	+ 3.9%
ASK (mn.)	107,365	101,723	+ 5.5%
Passenger Load Factor	77.4%	78.6%	- 1.2 pp
FTK (mn.)	5,137	4,799	+ 7.0%
FATK (mn.)	8,311	7,931	+ 4.8%
Freight Load Factor	61.8%	60.5%	+ 1.3 pp

- Effective September 2014, the dataset comprises aggregated traffic data from the following 31 Asia Pacific based carriers: 5J, 6E, 9W, AI, AK, BI, BR, CA, CI, CX, CZ, GA, JL, JQ, KA, KC, KE, MH, MU, NH, NZ, OZ, PG, PR, SG, SQ, TG, TR, QF, VA and VN.
- Previous year data adjusted for comparison purposes

- RPK = revenue passenger kilometres
- ASK = available seat kilometres
- FTK = freight tonne kilometres
- FATK = available freight tonne kilometres
- All figures, including estimates for missing data, are provisional

AAPA MONTHLY INTERNATIONAL STATISTICS

Summary of Consolidated Results (thousands)

2013/14	PAX	RPK	ASK	PLF	FTK	FATK	FLF	RTK	ATK	OLF
Jan-14	21,418	79,965,034	101,722,847	78.61%	4,799,448	7,930,744	60.52%	12,117,231	17,446,813	69.45%
Feb-14	19,515	69,318,917	90,298,261	76.77%	4,026,973	6,603,904	60.98%	10,376,987	15,062,552	68.89%
Mar-14	20,975	74,427,001	98,279,061	75.73%	5,753,306	8,378,776	68.67%	12,595,583	17,547,284	71.78%
Apr-14	20,997	74,489,867	97,583,870	76.33%	5,133,288	7,998,665	64.18%	11,945,652	17,099,079	69.86%
May-14	20,441	73,742,585	99,343,550	74.23%	5,245,700	8,084,419	64.89%	12,055,737	17,366,332	69.42%
Jun-14	20,663	75,934,544	98,042,459	77.45%	5,313,956	8,047,862	66.03%	12,264,276	17,196,106	71.32%
Jul-14	22,189	81,841,423	103,514,082	79.06%	5,414,374	8,285,068	65.35%	12,830,914	17,911,136	71.64%
Aug-14	23,241	84,933,960	104,550,798	81.24%	5,234,917	8,301,591	63.06%	12,951,664	18,060,581	71.71%
Sep-14	20,756	76,024,965	99,491,045	76.41%	5,243,405	8,167,940	64.19%	12,172,691	17,437,497	69.81%
Oct-14	21,768	77,366,418	102,635,085	75.38%	5,589,267	8,413,418	66.43%	12,638,874	17,970,983	70.33%
Nov-14	21,070	73,576,461	98,434,492	74.75%	5,851,728	8,554,414	68.41%	12,573,046	17,740,472	70.87%
Dec-14	23,251	83,402,510	106,826,815	78.07%	5,543,138	8,485,218	65.33%	13,131,435	18,440,184	71.21%
TOTAL	256,283	925,023,685	1,200,722,366	77.04%	63,149,499	97,252,020	64.93%	147,654,090	209,279,018	70.55%

2013/14	PAX	RPK	ASK	PLF	FTK	FATK	FLF	RTK	ATK	OLF
Jan-14	9.5%	9.0%	8.4%	0.4	4.2%	6.6%	-1.4	6.8%	8.0%	-0.8
Feb-14	3.3%	3.6%	5.0%	-1.0	-0.6%	1.5%	-1.3	1.8%	4.1%	-1.5
Mar-14	1.0%	0.4%	5.2%	-3.6	7.5%	6.1%	0.9	3.5%	6.1%	-1.8
Apr-14	6.7%	6.7%	7.1%	-0.3	5.1%	5.8%	-0.4	5.6%	7.3%	-1.1
May-14	6.8%	6.4%	6.7%	-0.1	5.4%	4.5%	0.6	6.0%	6.4%	-0.3
Jun-14	1.6%	2.4%	5.4%	-2.2	5.4%	3.9%	0.9	3.5%	5.4%	-1.3
Jul-14	4.0%	4.5%	5.7%	-0.9	6.8%	3.2%	2.2	4.9%	5.0%	-0.1
Aug-14	3.8%	4.8%	6.0%	-1.0	5.7%	3.3%	1.5	4.9%	5.4%	-0.4
Sep-14	3.1%	3.4%	5.7%	-1.7	5.0%	3.6%	0.9	3.9%	5.2%	-0.9
Oct-14	6.0%	4.9%	6.4%	-1.1	6.2%	3.7%	1.6	5.1%	5.6%	-0.4
Nov-14	5.4%	3.8%	4.4%	-0.5	5.7%	1.8%	2.5	4.4%	3.8%	0.4
Dec-14	7.8%	6.5%	5.7%	0.6	6.0%	4.4%	1.0	6.1%	5.1%	0.7
GROWTH	4.9%	4.7%	6.0%	-0.9	5.3%	4.0%	0.8	4.7%	5.6%	-0.6

Percentage or Percentage Point Change

CY	PAX	RPK	ASK	PLF	FTK	FATK	FLF	RTK	ATK	OLF
2009	176,548	678,862,490	913,265,605	74.33%	53,025,040	82,881,494	63.98%	116,760,215	168,508,544	69.29%
2010	199,719	748,329,072	956,502,440	78.24%	65,797,161	95,557,237	68.86%	135,496,828	184,786,039	73.33%
2011	208,573	779,722,979	1,020,828,321	76.38%	62,791,788	95,826,950	65.53%	134,687,947	190,626,840	70.66%
2012	225,253	826,623,131	1,060,237,125	77.97%	60,635,399	92,545,454	65.52%	136,598,247	191,260,306	71.42%
2013	244,319	883,331,064	1,132,866,760	77.97%	59,960,856	93,481,688	64.14%	141,001,131	198,158,580	71.16%

CY	PAX	RPK	ASK	PLF	FTK	FATK	FLF	RTK	ATK	OLF
2010	13.1%	10.2%	4.7%	3.9	24.1%	15.3%	4.9	16.0%	9.7%	4.0
2011	4.4%	4.2%	6.7%	-1.9	-4.6%	0.3%	-3.3	-0.6%	3.2%	-2.7
2012	8.0%	6.0%	3.9%	1.6	-3.4%	-3.4%	0.0	1.4%	0.3%	0.8
2013	8.5%	6.9%	6.9%	0.0	-1.1%	1.0%	-1.4	3.2%	3.6%	-0.3

Percentage or Percentage Point Change

Note:

- 2009-2010 data consolidated from 29 carriers based in the region: 5J, 6E, 9W, AI, AK, BI, BR, CA, CI, CX, CZ, GA, JL, JQ, KA, KE, MH, MU, NH, NZ, OZ, PR, QF, SG, SQ, TG, TR, VA and VN
- 2011-2012 data consolidated from 30 carriers based in the region: 5J, 6E, 9W, AI, AK, BI, BR, CA, CI, CX, CZ, GA, JL, JQ, KA, KE, MH, MU, NH, NZ, OZ, PG, PR, SG, SQ, TG, TR, QF, VA and VN
- Data from 2013 consolidated from 31 carriers based in the region: 5J, 6E, 9W, AI, AK, BI, BR, CA, CI, CX, CZ, GA, JL, JQ, KA, KC, KE, MH, MU, NH, NZ, OZ, PG, PR, SG, SQ, TG, TR, QF, VA and VN
- Historical data from Jan 2013 was revised to include KC