

Airline Codes

5J	CEBU Pacific Air	MH	Malaysia Airlines
6E	IndiGo Airlines	MI	SilkAir
9W	Jet Airways	MU	China Eastern Airlines
AI	Air India	NH	All Nippon Airways
AK	AirAsia	NZ	Air New Zealand
BI	Royal Brunei Airlines	OZ	Asiana Airlines
BR	EVA Air	PG	Bangkok Airways
CA	Air China	PR	Philippine Airlines
CI	China Airlines	QF	Qantas Airways
CX	Cathay Pacific	SG	Spicejet
CZ	China Southern Airlines	SQ	Singapore Airlines
GA	Garuda	TG	Thai Airways Int'l
JL	Japan Airlines	TR	Tigerair
JQ	Jetstar Airways	VA	Virgin Australia
KC	Air Astana	VN	Vietnam Airlines
KE	Korean Airlines		

Percentage
(Mar 14 vs Mar 15)

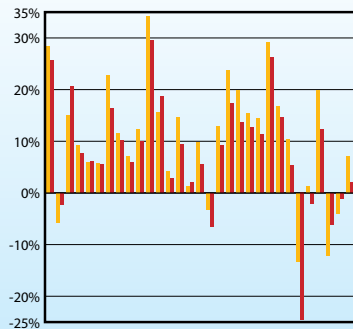
Percentage Points Change
(Mar 14 vs Mar 15)

Percentage
(Jan-Mar 14 vs Jan-Mar 15)

Percentage Points Change
(Jan-Mar 14 vs Jan-Mar 15)

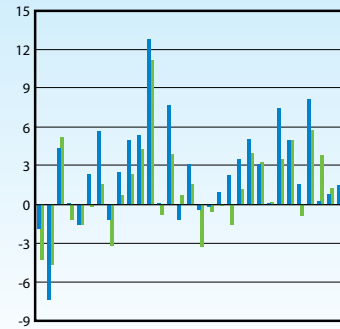
Note: CX includes KA, VA includes TT

RPK Growth by Carrier



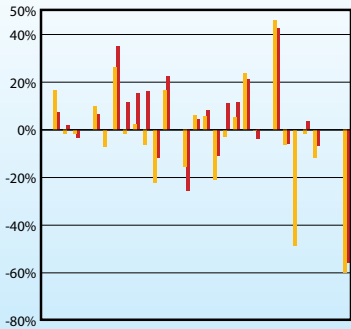
SJ SE 5W AI AK BI BR CA CI CX CZ GA JL JQ KC KE MH MI MUR NH NZ OZ PG PR QF SG SGTG TR VA VN

Passenger Load Factor Growth by Carrier



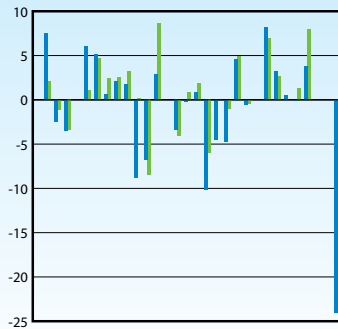
SJ SE 5W AI AK BI BR CA CI CX CZ GA JL JQ KC KE MH MI MUR NH NZ OZ PG PR QF SG SGTG TR VA VN

FTK Growth by Carrier



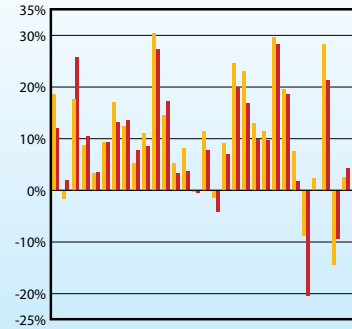
SJ SE 5W AI AK BI BR CA CI CX CZ GA JL JQ KC KE MH MI MUR NH NZ OZ PG PR QF SG SGTG TR VA VN

Freight Load Factor Growth by Carrier



SJ SE 5W AI AK BI BR CA CI CX CZ GA JL JQ KC KE MH MI MUR NH NZ OZ PG PR QF SG SGTG TR VA VN

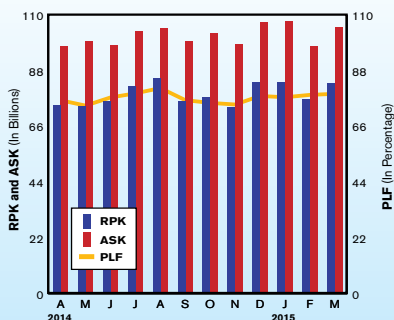
PAX Growth by Carrier



SJ SE 5W AI AK BI BR CA CI CX CZ GA JL JQ KC KE MH MI MUR NH NZ OZ PG PR QF SG SGTG TR VA VN

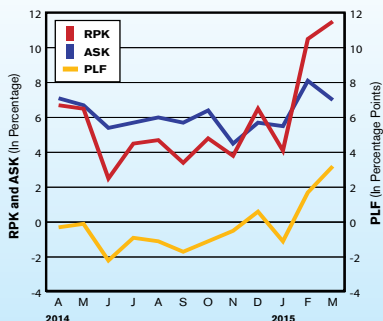
RPK, ASK and PLF

(Apr 14 to Mar 15)



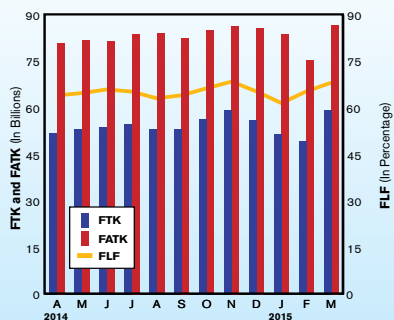
RPK, ASK and PLF Growth Rates

(Apr 14 to Mar 15)



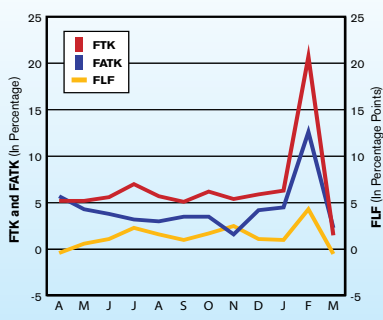
FTK, FATK and Freight Load Factor

(Apr 14 to Mar 15)



FTK, FATK and FLF Growth Rates

(Apr 14 to Mar 15)



TRAFFIC UPDATE – PRELIMINARY

INTERNATIONAL SCHEDULED SERVICES OF ASIA-PACIFIC AIRLINES

International	15-Apr	14-Apr	% Change	Jan-Apr 2015	Jan-Apr 2014	% Change
Passengers (000)	23,014	20,997	9.60%	90,723	82,905	9.40%
RPK (mn.)	80,588	74,490	8.20%	323,343	298,201	8.40%
ASK (mn.)	103,147	97,584	5.70%	413,259	387,884	6.50%
Passenger Load Factor	78.10%	76.30%	+ 1.8 pp	78.20%	76.90%	+ 1.3 pp
FTK (mn.)	5,384	5,191	3.70%	21,388	19,957	7.20%
FATK (mn.)	8,476	8,096	4.70%	33,057	31,277	5.70%
Freight Load Factor	63.50%	64.10%	- 0.6 pp	64.70%	63.80%	+ 0.9 pp

- Effective September 2014, the dataset comprises aggregated traffic data from the following 31 Asia Pacific based carriers: 5J, 6E, 9W, AI, AK, BI, BR, CA, CI, CX, CZ, GA, JL, JQ, KA, KC, KE, MH, MU, NH, NZ, OZ, PG, PR, SG, SQ, TG, TR, QF, VA and VN.
- Previous year data adjusted for comparison purposes

- RPK = revenue passenger kilometres
- ASK = available seat kilometres
- FTK = freight tonne kilometres
- FATK = available freight tonne kilometres
- All figures, including estimates for missing data, are provisional

AAPA MONTHLY INTERNATIONAL STATISTICS

Summary of Consolidated Results (thousands)

2014/15	PAX	RPK	ASK	PLF	FTK	FATK	FLF	RTK	ATK	OLF
Apr-14	20,997	74,489,867	97,583,870	76.33%	5,133,288	7,998,665	64.18%	11,945,652	17,099,079	69.86%
May-14	20,441	73,742,585	99,343,550	74.23%	5,245,700	8,084,419	64.89%	12,055,737	17,366,332	69.42%
Jun-14	20,663	75,934,544	98,042,459	77.45%	5,313,956	8,047,862	66.03%	12,264,276	17,196,106	71.32%
Jul-14	22,189	81,841,423	103,514,082	79.06%	5,414,374	8,285,068	65.35%	12,830,914	17,911,136	71.64%
Aug-14	23,241	84,933,960	104,550,798	81.24%	5,234,917	8,301,591	63.06%	12,951,664	18,060,581	71.71%
Sep-14	20,756	76,024,965	99,491,045	76.41%	5,243,405	8,167,940	64.19%	12,172,691	17,437,497	69.81%
Oct-14	21,768	77,366,418	102,635,085	75.38%	5,589,267	8,413,418	66.43%	12,638,874	17,970,983	70.33%
Nov-14	21,070	73,576,461	98,434,492	74.75%	5,851,728	8,554,414	68.41%	12,573,046	17,740,472	70.87%
Dec-14	23,251	83,402,510	106,826,815	78.07%	5,543,138	8,485,218	65.33%	13,131,435	18,440,184	71.21%
Jan-15	22,472	83,231,620	107,359,676	77.53%	5,158,079	8,372,098	61.61%	12,853,869	18,511,177	69.44%
Feb-15	21,943	76,565,058	97,596,021	78.45%	4,926,158	7,531,807	65.40%	12,018,278	16,774,070	71.65%
Mar-15	23,343	82,982,660	105,205,159	78.88%	5,920,149	8,676,785	68.23%	13,627,586	18,653,804	73.06%
TOTAL	67,757	242,779,337	310,160,856	78.28%	16,004,386	24,580,690	65.11%	38,499,733	53,939,051	71.38%

2014/15	PAX	RPK	ASK	PLF	FTK	FATK	FLF	RTK	ATK	OLF
Apr-14	6.7%	6.7%	7.1%	-0.3	5.1%	5.8%	-0.4	5.6%	7.3%	-1.1
May-14	6.8%	6.4%	6.7%	-0.1	5.4%	4.5%	0.6	6.0%	6.4%	-0.3
Jun-14	1.6%	2.4%	5.4%	-2.2	5.4%	3.9%	0.9	3.5%	5.4%	-1.3
Jul-14	4.0%	4.5%	5.7%	-0.9	6.8%	3.2%	2.2	4.9%	5.0%	-0.1
Aug-14	3.8%	4.8%	6.0%	-1.0	5.7%	3.3%	1.5	4.9%	5.4%	-0.4
Sep-14	3.1%	3.4%	5.7%	-1.7	5.0%	3.6%	0.9	3.9%	5.2%	-0.9
Oct-14	6.0%	4.9%	6.4%	-1.1	6.2%	3.7%	1.6	5.1%	5.6%	-0.4
Nov-14	5.4%	3.8%	4.4%	-0.5	5.7%	1.8%	2.5	4.4%	3.8%	0.4
Dec-14	7.8%	6.5%	5.7%	0.6	6.0%	4.4%	1.0	6.1%	5.1%	0.7
Jan-15	4.9%	4.1%	5.5%	-1.1	6.3%	4.5%	1.0	4.9%	5.2%	-0.2
Feb-15	12.4%	10.5%	8.1%	1.7	20.7%	12.6%	4.3	14.4%	10.5%	2.5
Mar-15	11.3%	11.5%	7.0%	3.2	1.5%	2.3%	-0.5	6.9%	5.1%	1.2
GROWTH	9.4%	8.5%	6.8%	1.2	8.4%	6.0%	1.4	8.4%	6.8%	1.1

Percentage or Percentage Point Change

CY	PAX	RPK	ASK	PLF	FTK	FATK	FLF	RTK	ATK	OLF
2010	199,719	748,329,072	956,502,440	78.24%	66,482,762	96,655,315	68.78%	136,551,799	185,849,125	73.47%
2011	208,573	779,722,979	1,020,828,321	76.38%	63,517,713	97,147,456	65.38%	136,163,032	192,457,984	70.75%
2012	225,253	826,623,131	1,060,237,125	77.97%	61,382,916	93,907,867	65.37%	138,259,921	193,295,535	71.53%
2013	244,319	883,331,064	1,132,920,864	77.97%	60,691,434	94,713,942	64.08%	142,715,350	200,316,966	71.24%
2014	256,229	924,850,870	1,200,861,013	77.02%	63,916,598	98,401,303	64.96%	149,644,411	211,566,699	70.73%

CY	PAX	RPK	ASK	PLF	FTK	FATK	FLF	RTK	ATK	OLF
2011	4.4%	4.2%	6.7%	-1.9	-4.5%	0.5%	-3.4	-0.3%	3.6%	-2.7
2012	8.0%	6.0%	3.9%	1.6	-3.4%	-3.3%	0.0	1.5%	0.4%	0.8
2013	8.5%	6.9%	6.9%	0.0	-1.1%	0.9%	-1.3	3.2%	3.6%	-0.3
2014	4.9%	4.7%	6.0%	-1.0	5.3%	3.9%	0.9	4.9%	5.6%	-0.5

Percentage or Percentage Point Change

Note:

- 2010 data consolidated from 29 carriers based in the region: 5J, 6E, 9W, AI, AK, BI, BR, CA, CI, CX, CZ, GA, JL, JQ, KA, KE, MH, MU, NH, NZ, OZ, PR, QF, SG, SQ, TG, TR, VA and VN
- 2011-2012 data consolidated from 30 carriers based in the region: 5J, 6E, 9W, AI, AK, BI, BR, CA, CI, CX, CZ, GA, JL, JQ, KA, KE, MH, MU, NH, NZ, OZ, PG, PR, SG, SQ, TG, TR, QF, VA and VN
- Data from 2013 consolidated from 31 carriers based in the region: 5J, 6E, 9W, AI, AK, BI, BR, CA, CI, CX, CZ, GA, JL, JQ, KA, KC, KE, MH, MU, NH, NZ, OZ, PG, PR, SG, SQ, TG, TR, QF, VA and VN