

Airline Codes

5J	CEBU Pacific Air	MH	Malaysia Airlines
6E	IndiGo Airlines	MI	SilkAir
9W	Jet Airways	MU	China Eastern Airlines
AI	Air India	NH	All Nippon Airways
AK	AirAsia	NZ	Air New Zealand
BI	Royal Brunei Airlines	OZ	Asiana Airlines
BR	EVA Air	PG	Bangkok Airways
CA	Air China	PR	Philippine Airlines
CI	China Airlines	QF	Qantas Airways
CX	Cathay Pacific	SG	Spicejet
CZ	China Southern Airlines	SQ	Singapore Airlines
GA	Garuda	TG	Thai Airways Int'l
JL	Japan Airlines	TR	Tigerair
JQ	Jetstar Airways	VA	Virgin Australia
KC	Air Astana	VN	Vietnam Airlines
KE	Korean Airlines		

Percentage
(Aug 14 vs Aug 15)

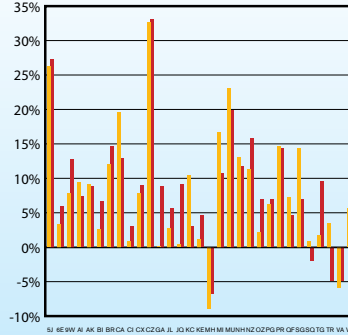
Percentage Points Change
(Aug 14 vs Aug 15)

Percentage
(Jan-Aug 14 vs Jan-Aug 15)

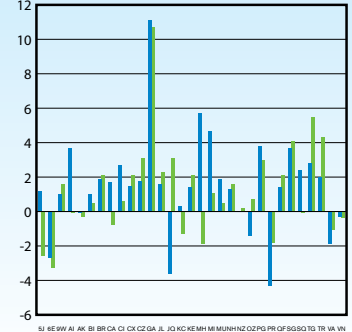
Percentage Points Change
(Jan-Aug 14 vs Jan-Aug 15)

Note: CX includes KA, VA includes TT

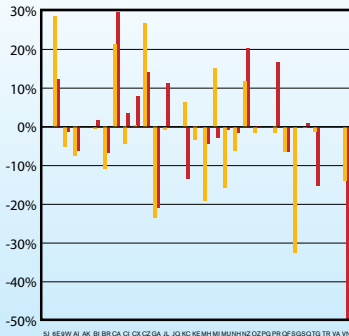
RPK Growth by Carrier



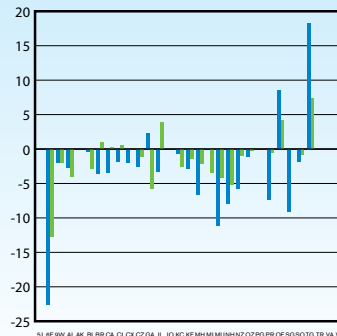
Passenger Load Factor Growth by Carrier



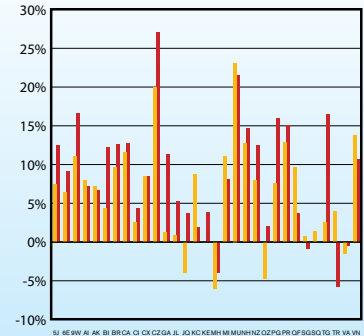
FTK Growth by Carrier



Freight Load Factor Growth by Carrier

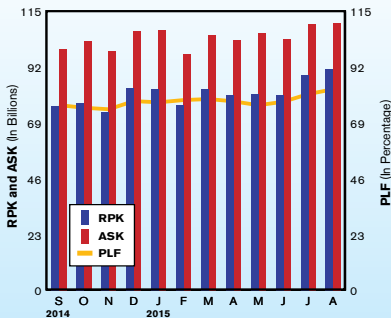


PAX Growth by Carrier



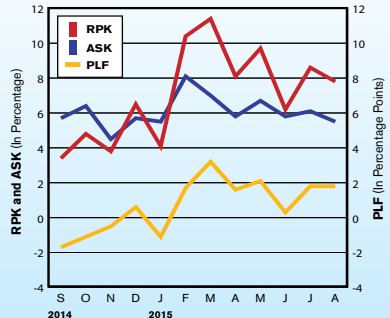
RPK, ASK and PLF

(Sep 14 to Aug 15)



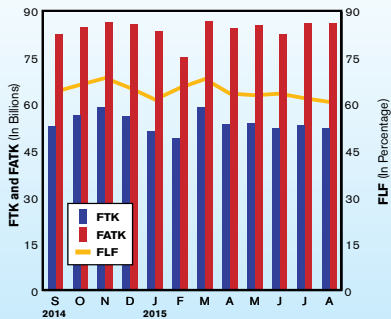
RPK, ASK and PLF Growth Rates

(Sep 14 to Aug 15)



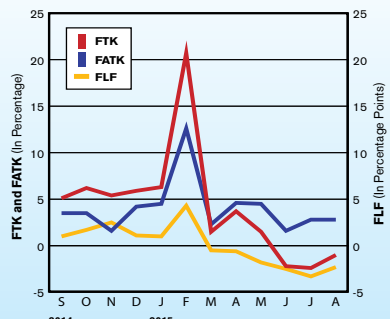
FTK, FATK and Freight Load Factor

(Sep 14 to Aug 15)



FTK, FATK and FLF Growth Rates

(Sep 14 to Aug 15)



TRAFFIC UPDATE – PRELIMINARY

INTERNATIONAL SCHEDULED SERVICES OF ASIA-PACIFIC AIRLINES

International	Sep-15	Sep-14	% Change	Jan-Sep 2015	Jan-Sep 2014	% Change
Passengers (000)	21,986	20,747	+ 6.0%	206,059	190,194	+ 8.3%
RPK (mn.)	81,577	75,991	+ 7.4%	746,741	690,558	+ 8.1%
ASK (mn.)	105,622	99,478	+ 6.2%	948,813	892,744	+ 6.3%
Passenger Load Factor	77.2%	76.4%	+ 0.8 pp	78.7%	77.4%	+ 1.3 pp
FTK (mn.)	5,303	5,304	0.0%	47,936	46,726	+ 2.6%
FATK (mn.)	8,456	8,267	+ 2.3%	75,587	72,657	+ 4.0%
Freight Load Factor	62.7%	64.2%	- 1.5 pp	63.4%	64.3%	- 0.9 pp

- Effective September 2014, the dataset comprises aggregated traffic data from the following 31 Asia Pacific based carriers: 5J, 6E, 9W, AI, AK, BI, BR, CA, CI, CX, CZ, GA, JL, JQ, KA, KC, KE, MH, MU, NH, NZ, OZ, PG, PR, SG, SQ, TG, TR, QF, VA and VN.
- Previous year data adjusted for comparison purposes

- RPK = revenue passenger kilometres
- ASK = available seat kilometres
- FTK = freight tonne kilometres
- FATK = available freight tonne kilometres
- All figures, including estimates for missing data, are provisional

AAPA MONTHLY INTERNATIONAL STATISTICS

Summary of Consolidated Results (thousands)

2014/15	PAX	RPK	ASK	PLF	FTK	FATK	FLF	RTK	ATK	OLF
Sep-14	20,756	76,024,965	99,491,045	76.41%	5,243,405	8,167,940	64.19%	12,172,691	17,437,497	69.81%
Oct-14	21,768	77,366,418	102,635,085	75.38%	5,589,267	8,413,418	66.43%	12,638,874	17,970,983	70.33%
Nov-14	21,070	73,576,461	98,434,492	74.75%	5,851,728	8,554,414	68.41%	12,573,046	17,740,472	70.87%
Dec-14	23,251	83,402,510	106,826,815	78.07%	5,543,138	8,485,218	65.33%	13,131,435	18,440,184	71.21%
Jan-15	22,472	83,216,557	107,336,609	77.53%	5,158,079	8,372,098	61.61%	12,853,345	18,513,522	69.43%
Feb-15	21,941	76,550,811	97,575,546	78.45%	4,926,158	7,531,807	65.40%	12,017,681	16,776,159	71.64%
Mar-15	23,326	82,940,938	105,149,185	78.88%	5,920,149	8,676,785	68.23%	13,624,733	18,653,355	73.04%
Apr-15	23,074	80,518,358	103,267,302	77.97%	5,382,083	8,468,786	63.55%	12,885,292	18,283,216	70.48%
May-15	22,960	80,934,794	106,014,479	76.34%	5,386,934	8,547,784	63.02%	12,929,785	18,621,617	69.43%
Jun-15	21,912	80,690,658	103,760,033	77.77%	5,255,547	8,273,728	63.52%	12,761,170	18,135,299	70.37%
Jul-15	23,641	88,887,130	109,825,707	80.93%	5,349,185	8,622,773	62.04%	13,567,786	19,059,014	71.19%
Aug-15	24,746	91,424,520	110,262,025	82.92%	5,255,153	8,637,161	60.84%	13,687,434	19,080,948	71.73%
TOTAL	184,072	665,163,765	843,190,887	78.89%	42,633,288	67,130,921	63.51%	104,327,226	147,123,130	70.91%

2014/15	PAX	RPK	ASK	PLF	FTK	FATK	FLF	RTK	ATK	OLF
Sep-14	3.1%	3.4%	5.7%	-1.7	5.0%	3.6%	0.9	3.9%	5.2%	-0.9
Oct-14	6.0%	4.9%	6.4%	-1.1	6.2%	3.7%	1.6	5.1%	5.6%	-0.4
Nov-14	5.4%	3.8%	4.4%	-0.5	5.7%	1.8%	2.5	4.4%	3.8%	0.4
Dec-14	7.8%	6.5%	5.7%	0.6	6.0%	4.4%	1.0	6.1%	5.1%	0.7
Jan-15	4.9%	4.1%	5.5%	-1.1	6.3%	4.5%	1.0	4.9%	5.2%	-0.2
Feb-15	12.4%	10.4%	8.1%	1.7	20.7%	12.6%	4.3	14.4%	10.5%	2.4
Mar-15	11.2%	11.4%	7.0%	3.2	1.5%	2.3%	-0.5	6.9%	5.1%	1.2
Apr-15	9.9%	8.1%	5.8%	1.6	3.7%	4.6%	-0.6	6.5%	5.7%	0.5
May-15	12.3%	9.7%	6.7%	2.1	1.5%	4.5%	-1.8	6.0%	6.1%	-0.1
Jun-15	6.0%	6.2%	5.8%	0.3	-2.2%	1.6%	-2.5	2.7%	4.2%	-1.0
Jul-15	6.5%	8.6%	6.1%	1.8	-2.4%	2.8%	-3.3	4.1%	5.0%	-0.6
Aug-15	6.6%	7.8%	5.5%	1.8	-1.0%	2.8%	-2.3	4.2%	4.5%	-0.2
GROWTH	8.6%	8.2%	6.3%	1.4	2.9%	4.3%	-0.8	6.0%	5.7%	0.2

Percentage or Percentage Point Change

CY	PAX	RPK	ASK	PLF	FTK	FATK	FLF	RTK	ATK	OLF
2010	199,719	748,329,072	956,502,440	78.24%	66,482,762	96,655,315	68.78%	136,551,799	185,849,125	73.47%
2011	208,573	779,722,979	1,020,828,321	76.38%	63,517,713	97,147,456	65.38%	136,163,032	192,457,984	70.75%
2012	225,253	826,623,131	1,060,237,125	77.97%	61,382,916	93,907,867	65.37%	138,259,921	193,295,535	71.53%
2013	244,319	883,331,064	1,132,920,864	77.97%	60,691,434	94,713,942	64.08%	142,715,350	200,316,966	71.24%
2014	256,205	924,734,739	1,200,671,867	77.02%	63,916,598	98,401,303	64.96%	149,641,463	211,588,672	70.72%

CY	PAX	RPK	ASK	PLF	FTK	FATK	FLF	RTK	ATK	OLF
2011	4.4%	4.2%	6.7%	-1.9	-4.5%	0.5%	-3.4	-0.3%	3.6%	-2.7
2012	8.0%	6.0%	3.9%	1.6	-3.4%	-3.3%	0.0	1.5%	0.4%	0.8
2013	8.5%	6.9%	6.9%	0.0	-1.1%	0.9%	-1.3	3.2%	3.6%	-0.3
2014	4.9%	4.7%	6.0%	-1.0	5.3%	3.9%	0.9	4.9%	5.6%	-0.5

Percentage or Percentage Point Change

Note:

- 2010 data consolidated from 29 carriers based in the region: 5J, 6E, 9W, AI, AK, BI, BR, CA, CI, CX, CZ, GA, JL, JQ, KA, KE, MH, MU, NH, NZ, OZ, PR, QF, SG, SQ, TG, TR, VA and VN
- 2011-2012 data consolidated from 30 carriers based in the region: 5J, 6E, 9W, AI, AK, BI, BR, CA, CI, CX, CZ, GA, JL, JQ, KA, KE, MH, MU, NH, NZ, OZ, PG, PR, SG, SQ, TG, TR, QF, VA and VN
- Data from 2013 consolidated from 31 carriers based in the region: 5J, 6E, 9W, AI, AK, BI, BR, CA, CI, CX, CZ, GA, JL, JQ, KA, KC, KE, MH, MU, NH, NZ, OZ, PG, PR, SG, SQ, TG, TR, QF, VA and VN