

Airline Codes

5J	CEBU Pacific Air	MH	Malaysia Airlines
6E	IndiGo Airlines	MI	SilkAir
9W	Jet Airways	MU	China Eastern Airlines
AI	Air India	NH	All Nippon Airways
AK	AirAsia	NZ	Air New Zealand
BI	Royal Brunei Airlines	OZ	Asiana Airlines
BR	EVA Air	PG	Bangkok Airways
CA	Air China	PR	Philippine Airlines
CI	China Airlines	QF	Qantas Airways
CX	Cathay Pacific	SG	Spicejet
CZ	China Southern Airlines	SQ	Singapore Airlines
GA	Garuda	TG	Thai Airways Int'l
JL	Japan Airlines	TR	Tigerair
JQ	Jetstar Airways	VA	Virgin Australia
KC	Air Astana	VN	Vietnam Airlines
KE	Korean Airlines		

Percentage
(Oct 14 vs Oct 15)

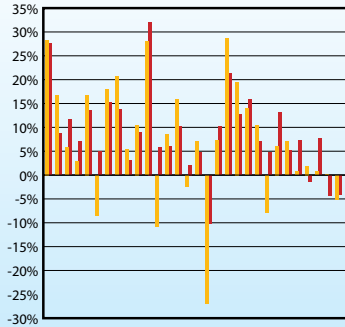
Percentage Points Change
(Oct 14 vs Oct 15)

Percentage
(Jan-Oct 14 vs Jan-Oct 15)

Percentage Points Change
(Jan-Oct 14 vs Jan-Oct 15)

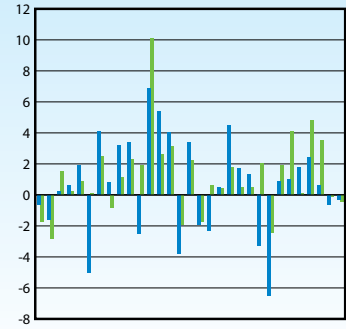
Note: CX includes KA, VA includes TT

RPK Growth by Carrier



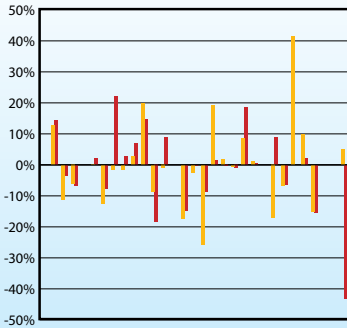
SJ 5E 9W AI AK BI BR CA CI CX CZ GA JL JO KC KEMH M MU NH NZ OZ PG PR QF SGO SGT TR VA VV

Passenger Load Factor Growth by Carrier



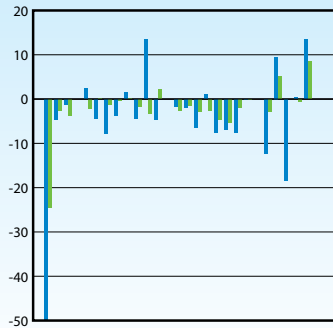
SJ 5E 9W AI AK BI BR CA CI CX CZ GA JL JO KC KEMH M MU NH NZ OZ PG PR QF SGO SGT TR VA VV

FTK Growth by Carrier



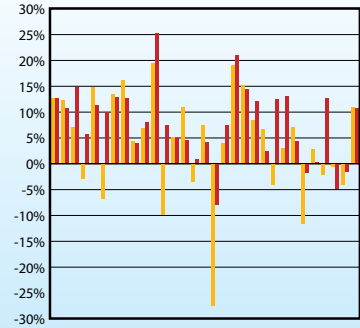
SJ 5E 9W AI AK BI BR CA CI CX CZ GA JL JO KC KEMH M MU NH NZ OZ PG PR QF SGO SGT TR VA VV

Freight Load Factor Growth by Carrier



SJ 5E 9W AI AK BI BR CA CI CX CZ GA JL JO KC KEMH M MU NH NZ OZ PG PR QF SGO SGT TR VA VV

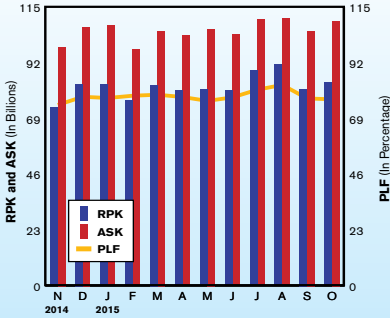
PAX Growth by Carrier



SJ 5E 9W AI AK BI BR CA CI CX CZ GA JL JO KC KEMH M MU NH NZ OZ PG PR QF SGO SGT TR VA VV

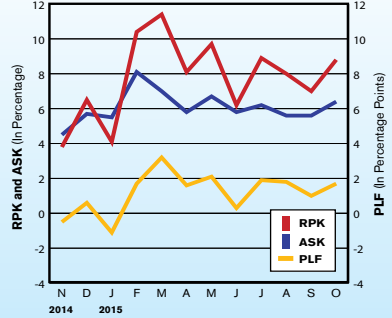
RPK, ASK and PLF

(Nov 14 to Oct 15)



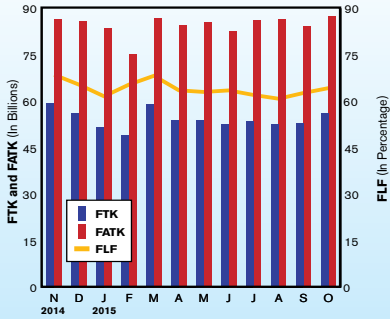
RPK, ASK and PLF Growth Rates

(Nov 14 to Oct 15)



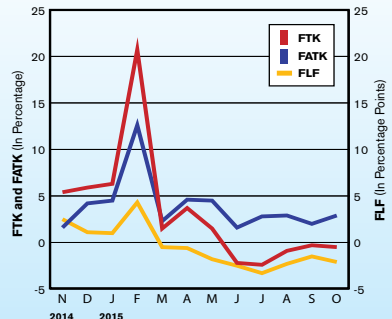
FTK, FATK and Freight Load Factor

(Nov 14 to Oct 15)



FTK, FATK and FLF Growth Rates

(Nov 14 to Oct 15)



TRAFFIC UPDATE – PRELIMINARY

INTERNATIONAL SCHEDULED SERVICES OF ASIA-PACIFIC AIRLINES

International	Nov-15	Nov-14	% Change	Jan-Nov 2015	Jan-Nov 2014	% Change
Passengers (000)	22,460	21,055	+ 6.7%	251,884	233,006	+ 8.1%
RPK (mn.)	79,920	73,551	+ 8.7%	910,815	841,383	+ 8.3%
ASK (mn.)	104,113	98,491	+ 5.7%	1,161,837	1,093,850	+ 6.2%
Passenger Load Factor	76.8%	74.7%	+ 2.1 pp	78.4%	76.9%	+ 1.5 pp
FTK (mn.)	5,786	5,930	- 2.4%	59,332	58,304	+ 1.8%
FATK (mn.)	8,808	8,649	+ 1.8%	93,132	89,814	+ 3.7%
Freight Load Factor	65.7%	68.6%	- 2.9 pp	63.7%	64.9%	- 1.2 pp

- Effective September 2014, the dataset comprises aggregated traffic data from the following 31 Asia Pacific based carriers: 5J, 6E, 9W, AI, AK, BI, BR, CA, CI, CX, CZ, GA, JL, JQ, KA, KC, KE, MH, MU, NH, NZ, OZ, PG, PR, SG, SQ, TG, TR, QF, VA and VN.
- Previous year data adjusted for comparison purposes

- RPK = revenue passenger kilometres
- ASK = available seat kilometres
- FTK = freight tonne kilometres
- FATK = available freight tonne kilometres
- All figures, including estimates for missing data, are provisional

AAPA MONTHLY INTERNATIONAL STATISTICS

Summary of Consolidated Results (thousands)

2014/15	PAX	RPK	ASK	PLF	FTK	FATK	FLF	RTK	ATK	OLF
Nov-14	21,070	73,576,461	98,434,492	74.75%	5,851,728	8,554,414	68.41%	12,573,046	17,740,472	70.87%
Dec-14	23,251	83,402,510	106,826,815	78.07%	5,543,138	8,485,218	65.33%	13,131,435	18,440,184	71.21%
Jan-15	22,472	83,216,557	107,336,609	77.53%	5,158,079	8,372,098	61.61%	12,853,345	18,513,522	69.43%
Feb-15	21,941	76,550,811	97,575,546	78.45%	4,926,158	7,531,807	65.40%	12,017,681	16,776,159	71.64%
Mar-15	23,326	82,940,938	105,149,185	78.88%	5,920,149	8,676,785	68.23%	13,624,733	18,653,355	73.04%
Apr-15	23,074	80,518,358	103,267,302	77.97%	5,382,083	8,468,786	63.55%	12,885,292	18,283,216	70.48%
May-15	22,960	80,934,794	106,014,479	76.34%	5,386,934	8,547,784	63.02%	12,929,785	18,621,617	69.43%
Jun-15	21,912	80,690,658	103,760,033	77.77%	5,255,547	8,273,728	63.52%	12,761,170	18,135,299	70.37%
Jul-15	23,781	89,089,623	109,954,028	81.02%	5,349,924	8,627,086	62.01%	13,587,023	19,071,205	71.24%
Aug-15	24,862	91,619,338	110,387,452	83.00%	5,255,979	8,641,432	60.82%	13,705,942	19,092,863	71.79%
Sep-15	21,946	81,281,510	105,087,204	77.35%	5,287,773	8,433,285	62.70%	12,837,493	18,408,981	69.73%
Oct-15	23,150	84,052,258	109,191,723	76.98%	5,623,110	8,750,466	64.26%	13,423,122	19,092,348	70.31%
TOTAL	229,424	830,894,844	1,057,723,562	78.56%	53,545,736	84,323,256	63.50%	130,625,585	184,648,564	70.74%

2014/15	PAX	RPK	ASK	PLF	FTK	FATK	FLF	RTK	ATK	OLF
Nov-14	5.4%	3.8%	4.4%	-0.5	5.7%	1.8%	2.5	4.4%	3.8%	0.4
Dec-14	7.8%	6.5%	5.7%	0.6	6.0%	4.4%	1.0	6.1%	5.1%	0.7
Jan-15	4.9%	4.1%	5.5%	-1.1	6.3%	4.5%	1.0	4.9%	5.2%	-0.2
Feb-15	12.4%	10.4%	8.1%	1.7	20.7%	12.6%	4.3	14.4%	10.5%	2.4
Mar-15	11.2%	11.4%	7.0%	3.2	1.5%	2.3%	-0.5	6.9%	5.1%	1.2
Apr-15	9.9%	8.1%	5.8%	1.6	3.7%	4.6%	-0.6	6.5%	5.7%	0.5
May-15	12.3%	9.7%	6.7%	2.1	1.5%	4.5%	-1.8	6.0%	6.1%	-0.1
Jun-15	6.0%	6.2%	5.8%	0.3	-2.2%	1.6%	-2.5	2.7%	4.2%	-1.0
Jul-15	7.1%	8.9%	6.2%	1.9	-2.4%	2.8%	-3.3	4.2%	5.1%	-0.6
Aug-15	7.1%	8.0%	5.6%	1.8	-0.9%	2.9%	-2.3	4.4%	4.6%	-0.2
Sep-15	5.8%	7.0%	5.6%	1.0	-0.3%	2.0%	-1.5	3.9%	4.3%	-0.3
Oct-15	6.4%	8.8%	6.4%	1.7	-0.5%	2.9%	-2.1	4.8%	5.1%	-0.2
GROWTH	8.2%	8.2%	6.3%	1.4	2.2%	3.9%	-1.0	5.7%	5.5%	0.1

Percentage or Percentage Point Change

CY	PAX	RPK	ASK	PLF	FTK	FATK	FLF	RTK	ATK	OLF
2010	199,719	748,329,072	956,502,440	78.24%	66,482,762	96,655,315	68.78%	136,551,799	185,849,125	73.47%
2011	208,573	779,722,979	1,020,828,321	76.38%	63,517,713	97,147,456	65.38%	136,163,032	192,457,984	70.75%
2012	225,253	826,623,131	1,060,237,125	77.97%	61,382,916	93,907,867	65.37%	138,259,921	193,295,535	71.53%
2013	244,319	883,331,064	1,132,920,864	77.97%	60,691,434	94,713,942	64.08%	142,715,350	200,316,966	71.24%
2014	256,205	924,734,739	1,200,671,867	77.02%	63,916,598	98,401,303	64.96%	149,641,463	211,588,672	70.72%

CY	PAX	RPK	ASK	PLF	FTK	FATK	FLF	RTK	ATK	OLF
2011	4.4%	4.2%	6.7%	-1.9	-4.5%	0.5%	-3.4	-0.3%	3.6%	-2.7
2012	8.0%	6.0%	3.9%	1.6	-3.4%	-3.3%	0.0	1.5%	0.4%	0.8
2013	8.5%	6.9%	6.9%	0.0	-1.1%	0.9%	-1.3	3.2%	3.6%	-0.3
2014	4.9%	4.7%	6.0%	-1.0	5.3%	3.9%	0.9	4.9%	5.6%	-0.5

Percentage or Percentage Point Change

Note:

- 2010 data consolidated from 29 carriers based in the region: 5J, 6E, 9W, AI, AK, BI, BR, CA, CI, CX, CZ, GA, JL, JQ, KA, KE, MH, MU, NH, NZ, OZ, PR, QF, SG, SQ, TG, TR, VA and VN
- 2011-2012 data consolidated from 30 carriers based in the region: 5J, 6E, 9W, AI, AK, BI, BR, CA, CI, CX, CZ, GA, JL, JQ, KA, KE, MH, MU, NH, NZ, OZ, PG, PR, SG, SQ, TG, TR, QF, VA and VN
- Data from 2013 consolidated from 31 carriers based in the region: 5J, 6E, 9W, AI, AK, BI, BR, CA, CI, CX, CZ, GA, JL, JQ, KA, KC, KE, MH, MU, NH, NZ, OZ, PG, PR, SG, SQ, TG, TR, QF, VA and VN