

Airline Codes

BI	Royal Brunei Airlines	MH	Malaysia Airlines
BR	EVA Air	NH	All Nippon Airways
CI	China Airlines	OZ	Asiana Airlines
CX	Cathay Pacific	PR	Philippine Airlines
KA	Dragonair	QF	Qantas Airways
GA	Garuda	SQ	Singapore Airlines
JL	Japan Airlines	TG	Thai Airways Int'l
KE	Korean Airlines	VN	Vietnam Airlines

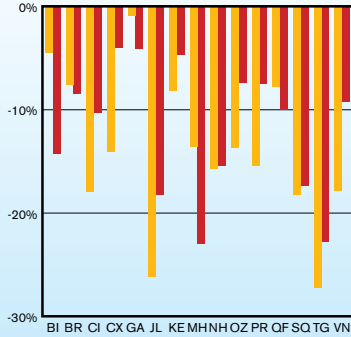
Percentage
(Jun 08 vs Jun 09)

Percentage Points Change
(Jun 08 vs Jun 09)

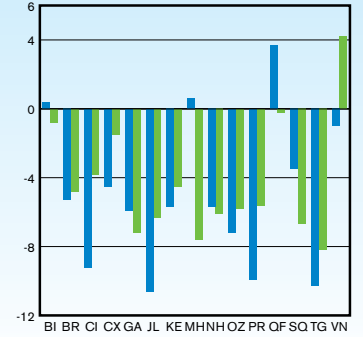
Percentage
(Jan-Jun 08 vs Jan-Jun 09)

Percentage Points Change
(Jan-Jun 08 vs Jan-Jun 09)

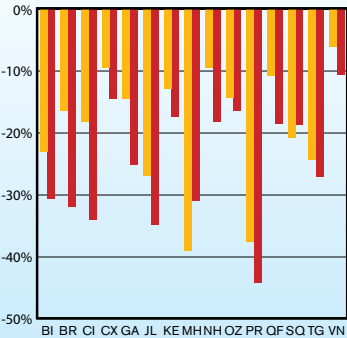
RPK Growth by Carrier



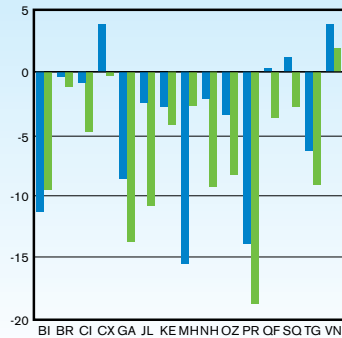
Passenger Load Factor Growth by Carrier



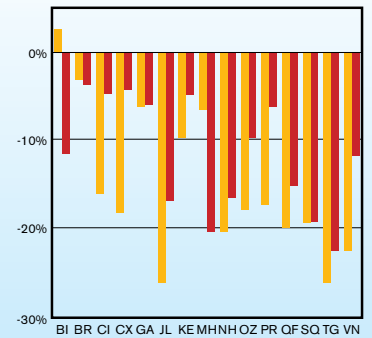
FTK Growth by Carrier



Freight Load Factor Growth by Carrier

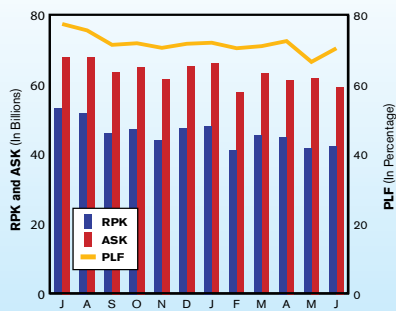


PAX Growth by Carrier



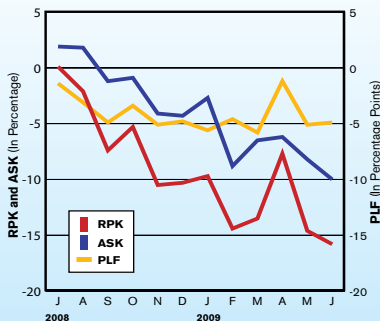
RPK, ASK and PLF

(Jul 08 to Jun 09)



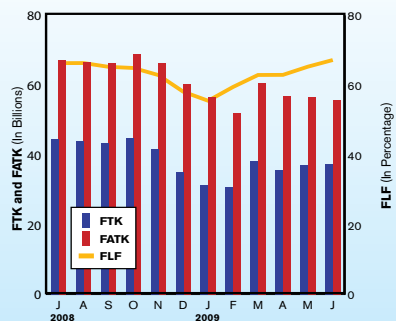
RPK, ASK and PLF Growth Rates

(Jul 08 to Jun 09)



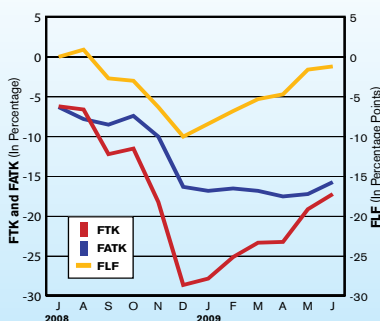
FTK, FATK and Freight Load Factor

(Jul 08 to Jun 09)



FTK, FATK, FLF Growth Rates

(Jul 08 to Jun 09)



TRAFFIC UPDATE – PRELIMINARY

INTERNATIONAL SCHEDULED SERVICES OF AAPA MEMBER AIRLINES

International	Jul-09	Jul-08	% Change	Jan-July 2009	Jan-July 2008	% Change
Passengers (000)	11,536	12,511	-7.80%	75,363	84,586	-10.90%
RPK (mn.)	48,646	53,169	-8.50%	313,469	355,243	-11.80%
ASK (mn.)	63,500	67,921	-6.50%	434,127	465,781	-6.80%
Passenger Load Factor	76.60%	78.30%	- 1.7 pp	72.20%	76.30%	- 4.1 pp
FTK (mn.)	3,954	4,461	-11.40%	25,091	31,667	-20.80%
FATK (mn.)	5,909	6,726	-12.10%	39,957	47,374	-15.70%
Freight Load Factor	66.90%	66.30%	+ 0.6 pp	62.80%	66.80%	- 4.0 pp

AAPA MONTHLY INTERNATIONAL STATISTICS

Summary of Consolidated Results (thousands)

2008/09	PAX	RPK	ASK	PLF	FTK	FATK	FLF	RTK	ATK	OLF
Jul-08	12,511	53,169,115	67,921,403	78.28%	4,460,396	6,726,145	66.31%	9,477,477	13,140,594	72.12%
Aug-08	12,213	51,876,974	67,867,956	76.44%	4,411,986	6,650,753	66.34%	9,305,167	13,065,363	71.22%
Sep-08	10,769	46,026,128	63,660,066	72.30%	4,337,003	6,646,057	65.26%	8,700,175	12,662,180	68.71%
Oct-08	11,510	47,350,296	65,074,250	72.76%	4,474,261	6,892,041	64.92%	8,955,124	13,039,212	68.68%
Nov-08	10,649	44,040,337	61,645,380	71.44%	4,168,601	6,626,855	62.90%	8,340,303	12,448,059	67.00%
Dec-08	11,170	47,405,355	65,283,675	72.61%	3,502,069	6,024,968	58.13%	7,986,122	12,203,496	65.44%
Jan-09	11,334	48,149,014	66,037,460	72.91%	3,136,504	5,647,898	55.53%	7,687,579	11,890,294	64.65%
Feb-09	10,035	41,189,951	57,745,426	71.33%	3,094,086	5,200,592	59.49%	6,993,888	10,638,865	65.74%
Mar-09	11,224	45,513,427	63,274,861	71.93%	3,814,081	6,061,444	62.92%	8,119,771	12,025,524	67.52%
Apr-09	11,134	45,039,792	61,376,816	73.38%	3,578,669	5,684,919	62.95%	7,822,206	11,467,157	68.21%
May-09	10,068	41,795,196	61,988,938	67.42%	3,703,174	5,671,419	65.30%	7,653,599	11,513,038	66.48%
Jun-09	9,851	42,352,353	59,395,483	71.31%	3,743,906	5,570,618	67.21%	7,743,068	11,175,947	69.28%
TOTAL	132,467	553,907,939	761,271,713	72.76%	46,424,736	73,403,708	63.25%	98,784,478	145,269,728	68.00%

2008/09	PAX	RPK	ASK	PLF	FTK	FATK	FLF	RTK	ATK	OLF
Jul-08	-1.2%	0.1%	1.9%	-1.4	-6.2%	-6.3%	0.0	-3.0%	-2.5%	-0.4
Aug-08	-4.6%	-2.1%	1.8%	-3.1	-6.6%	-7.8%	0.9	-4.3%	-3.4%	-0.6
Sep-08	-8.4%	-7.4%	-1.2%	-4.9	-12.2%	-8.5%	-2.7	-9.7%	-5.2%	-3.5
Oct-08	-4.7%	-5.3%	-0.9%	-3.4	-11.5%	-7.4%	-3.0	-8.4%	-4.5%	-3.0
Nov-08	-11.6%	-10.5%	-4.1%	-5.1	-18.2%	-10.0%	-6.3	-14.5%	-7.4%	-5.5
Dec-08	-11.5%	-10.3%	-4.3%	-4.8	-28.6%	-16.3%	-10.0	-19.3%	-11.5%	-6.3
Jan-09	-8.6%	-9.7%	-2.7%	-5.6	-27.8%	-16.8%	-8.4	-18.0%	-9.9%	-6.4
Feb-09	-14.0%	-14.4%	-8.8%	-4.6	-25.1%	-16.5%	-6.8	-19.4%	-12.8%	-5.3
Mar-09	-10.8%	-13.5%	-6.5%	-5.8	-23.3%	-16.8%	-5.3	-18.4%	-12.1%	-5.2
Apr-09	-5.4%	-7.7%	-6.2%	-1.2	-23.2%	-17.5%	-4.7	-15.7%	-11.5%	-3.3
May-09	-14.9%	-14.6%	-8.2%	-5.1	-19.1%	-17.2%	-1.6	-16.9%	-12.9%	-3.2
Jun-09	-16.8%	-15.8%	-10.0%	-4.9	-17.2%	-15.7%	-1.2	-16.5%	-13.1%	-2.8
GROWTH	-9.3%	-9.2%	-4.1%	-4.1	-18.1%	-12.9%	-4.0	-13.6%	-8.8%	-3.7

Percentage or Percentage Point Change

CY	PAX	RPK	ASK	PLF	FTK	FATK	FLF	RTK	ATK	OLF
2004	126,253	526,778,872	721,326,742	73.03%	50,453,626	74,801,046	67.45%	100,064,108	141,770,437	70.58%
2005	132,650	553,815,164	753,438,103	73.51%	52,281,340	78,999,903	66.18%	104,466,832	148,872,722	70.17%
2006	138,218	576,159,450	762,743,533	75.54%	54,884,310	81,998,562	66.93%	109,113,927	153,524,419	71.07%
2007	144,016	600,510,357	778,567,556	77.13%	56,361,862	84,783,258	66.48%	113,086,222	158,500,367	71.35%
2008	140,898	591,942,357	789,312,026	74.99%	52,560,591	80,214,862	65.52%	108,520,356	154,686,313	70.16%
2009 YTD	63,645	264,039,734	369,818,983	71.40%	21,070,420	33,836,890	62.27%	46,020,111	68,710,825	66.98%

CY	PAX	RPK	ASK	PLF	FTK	FATK	FLF	RTK	ATK	OLF
2005	5.1%	5.1%	4.5%	0.5	3.6%	5.6%	-1.3	4.4%	5.0%	-0.4
2006	4.2%	4.0%	1.2%	2.0	5.0%	3.8%	0.8	4.4%	3.1%	0.9
2007	4.2%	4.2%	2.1%	1.6	2.7%	3.4%	-0.5	3.6%	3.2%	0.3
2008	-2.2%	-1.4%	1.4%	-2.1	-6.7%	-5.4%	-1.0	-4.0%	-2.4%	-1.2
2009 YTD	-11.7%	-12.6%	-7.1%	-4.5	-22.6%	-16.8%	-4.7	-17.5%	-12.1%	-4.4

Percentage or Percentage Point Change

- Note:** 1. Data includes all 17 AAPA member airlines
 2. Figures for January 2009 to June 2009 restated
 3. AAPA consolidated traffic figures include Air New Zealand and Qantas Airways