

Airline Codes

BI	Royal Brunei Airlines	MH	Malaysia Airlines
BR	EVA Air	NH	All Nippon Airways
CI	China Airlines	OZ	Asiana Airlines
CX	Cathay Pacific	PR	Philippine Airlines
KA	Dragonair	QF	Qantas Airways
GA	Garuda	SQ	Singapore Airlines
JL	Japan Airlines	TG	Thai Airways Int'l
KE	Korean Airlines	VN	Vietnam Airlines

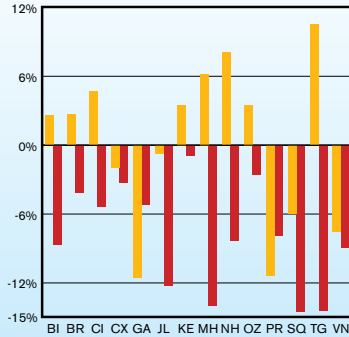
Percentage
(Oct 08 vs Oct 09)

Percentage Points Change
(Oct 08 vs Oct 09)

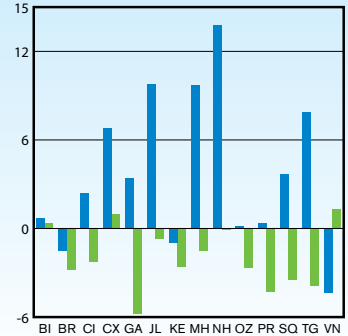
Percentage
(Jan-Oct 08 vs Jan-Oct 09)

Percentage Points Change
(Jan-Oct 08 vs Jan-Oct 09)

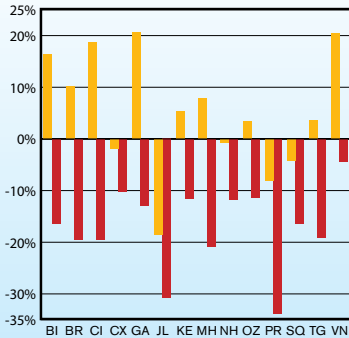
RPK Growth by Carrier



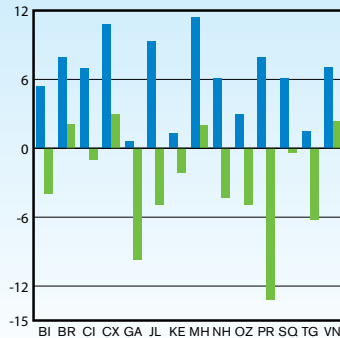
Passenger Load Factor Growth by Carrier



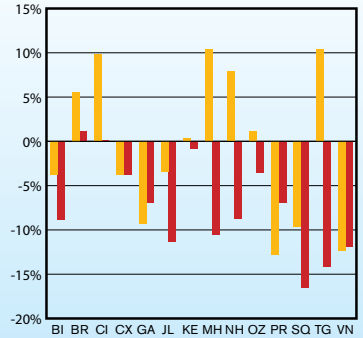
FTK Growth by Carrier



Freight Load Factor Growth by Carrier

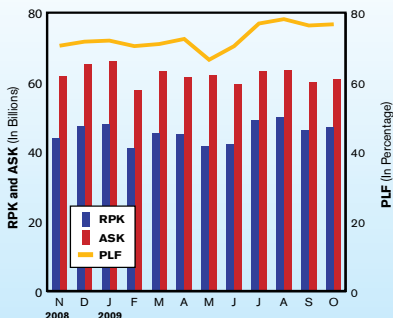


PAX Growth by Carrier



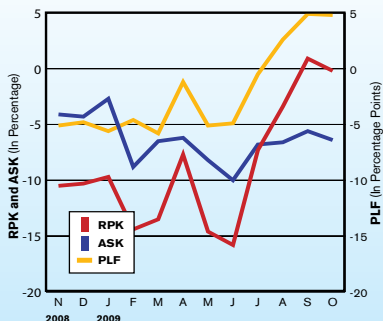
RPK, ASK and PLF

(Nov 08 to Oct 09)



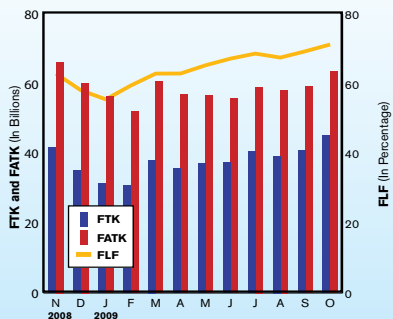
RPK, ASK and PLF Growth Rates

(Nov 08 to Oct 09)



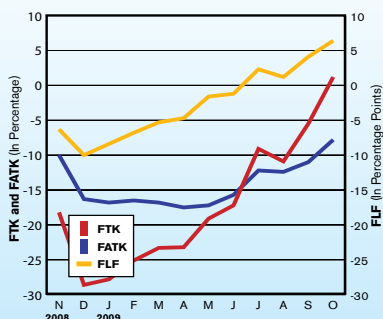
FTK, FATK and Freight Load Factor

(Nov 08 to Oct 09)



FTK, FATK, FLF Growth Rates

(Nov 08 to Oct 09)



TRAFFIC UPDATE – PRELIMINARY

INTERNATIONAL SCHEDULED SERVICES OF AAPA MEMBER AIRLINES

International	Nov-09	Nov-08	% Change	Jan-Nov 2009	Jan-Nov 2008	% Change
Passengers (000)	11,128	10,649	4.50%	120,729	129,727	-6.90%
RPK (mn.)	45,563	44,040	3.50%	502,670	544,537	-7.70%
ASK (mn.)	59,726	61,645	-3.10%	677,265	724,028	-6.50%
Passenger Load Factor	76.30%	71.40%	+ 4.9pp	74.20%	75.20%	- 1.0pp
FTK (mn.)	4,668	4,169	12.00%	42,353	49,059	-13.70%
FATK (mn.)	6,569	6,627	-0.90%	64,405	74,190	-13.20%
Freight Load Factor	71.10%	62.90%	+ 8.2pp	65.80%	66.10%	- 0.3pp

AAPA MONTHLY INTERNATIONAL STATISTICS

Summary of Consolidated Results (thousands)

2008/09	PAX	RPK	ASK	PLF	FTK	FATK	FLF	RTK	ATK	OLF
Nov-08	10,649	44,040,337	61,645,380	71.44%	4,168,601	6,626,855	62.90%	8,340,303	12,448,059	67.00%
Dec-08	11,170	47,405,355	65,283,675	72.61%	3,502,069	6,024,968	58.13%	7,986,122	12,203,496	65.44%
Jan-09	11,334	48,149,014	66,037,460	72.91%	3,136,504	5,647,898	55.53%	7,687,579	11,890,294	64.65%
Feb-09	10,035	41,189,951	57,745,426	71.33%	3,094,086	5,200,592	59.49%	6,993,888	10,638,865	65.74%
Mar-09	11,224	45,513,427	63,274,861	71.93%	3,814,081	6,061,444	62.92%	8,119,771	12,025,524	67.52%
Apr-09	11,134	45,039,792	61,376,816	73.38%	3,578,669	5,684,919	62.95%	7,822,206	11,467,157	68.21%
May-09	10,068	41,795,196	61,988,938	67.42%	3,703,174	5,671,419	65.30%	7,653,599	11,513,038	66.48%
Jun-09	9,851	42,352,353	59,395,483	71.31%	3,743,906	5,570,618	67.21%	7,743,068	11,175,947	69.28%
Jul-09	11,667	49,275,176	63,326,356	77.81%	4,056,192	5,908,648	68.65%	8,685,059	11,879,100	73.11%
Aug-09	12,071	50,118,791	63,391,407	79.06%	3,931,164	5,823,093	67.51%	8,641,625	11,817,191	73.13%
Sep-09	10,885	46,437,964	60,121,608	77.24%	4,099,202	5,914,004	69.31%	8,455,887	11,584,967	72.99%
Oct-09	11,333	47,235,939	60,881,163	77.59%	4,527,934	6,353,068	71.27%	8,886,952	12,086,216	73.53%
TOTAL	131,420	548,553,296	744,468,571	73.68%	45,355,582	70,487,526	64.35%	97,016,059	140,729,855	68.94%

2008/09	PAX	RPK	ASK	PLF	FTK	FATK	FLF	RTK	ATK	OLF
Nov-08	-11.6%	-10.5%	-4.1%	-5.1	-18.2%	-10.0%	-6.3	-14.5%	-7.4%	-5.5
Dec-08	-11.5%	-10.3%	-4.3%	-4.8	-28.6%	-16.3%	-10.0	-19.3%	-11.5%	-6.3
Jan-09	-8.6%	-9.7%	-2.7%	-5.6	-27.8%	-16.8%	-8.4	-18.0%	-9.9%	-6.4
Feb-09	-14.0%	-14.4%	-8.8%	-4.6	-25.1%	-16.5%	-6.8	-19.4%	-12.8%	-5.3
Mar-09	-10.8%	-13.5%	-6.5%	-5.8	-23.3%	-16.8%	-5.3	-18.4%	-12.1%	-5.2
Apr-09	-5.4%	-7.7%	-6.2%	-1.2	-23.2%	-17.5%	-4.7	-15.7%	-11.5%	-3.3
May-09	-14.9%	-14.6%	-8.2%	-5.1	-19.1%	-17.2%	-1.6	-16.9%	-12.9%	-3.2
Jun-09	-16.8%	-15.8%	-10.0%	-4.9	-17.2%	-15.7%	-1.2	-16.5%	-13.1%	-2.8
Jul-09	-6.7%	-7.3%	-6.8%	-0.5	-9.1%	-12.2%	2.3	-8.4%	-9.6%	1.0
Aug-09	-1.2%	-3.4%	-6.6%	2.6	-10.9%	-12.4%	1.2	-7.1%	-9.6%	1.9
Sep-09	1.1%	0.9%	-5.6%	4.9	-5.5%	-11.0%	4.1	-2.8%	-8.5%	4.3
Oct-09	-1.5%	-0.2%	-6.4%	4.8	1.2%	-7.8%	6.4	-0.8%	-7.3%	4.9
GROWTH	-8.6%	-9.0%	-6.3%	-2.1	-17.4%	-14.2%	-2.5	-13.3%	-10.5%	-2.2

Percentage or Percentage Point Change

CY	PAX	RPK	ASK	PLF	FTK	FATK	FLF	RTK	ATK	OLF
2004	126,253	526,778,872	721,326,742	73.03%	50,453,626	74,801,046	67.45%	100,064,108	141,770,437	70.58%
2005	132,650	553,815,164	753,438,103	73.51%	52,281,340	78,999,903	66.18%	104,466,832	148,872,722	70.17%
2006	138,218	576,159,450	762,743,533	75.54%	54,884,310	81,998,562	66.93%	109,113,927	153,524,419	71.07%
2007	144,016	600,510,357	778,567,556	77.13%	56,361,862	84,783,258	66.48%	113,086,222	158,500,367	71.35%
2008	140,898	591,942,357	789,312,026	74.99%	52,560,591	80,214,862	65.52%	108,520,356	154,686,313	70.16%
2009 YTD	109,601	457,107,604	617,539,516	74.02%	37,684,912	57,835,704	65.16%	80,689,634	116,078,300	69.51%

CY	PAX	RPK	ASK	PLF	FTK	FATK	FLF	RTK	ATK	OLF
2005	5.1%	5.1%	4.5%	0.5	3.6%	5.6%	-1.3	4.4%	5.0%	-0.4
2006	4.2%	4.0%	1.2%	2.0	5.0%	3.8%	0.8	4.4%	3.1%	0.9
2007	4.2%	4.2%	2.1%	1.6	2.7%	3.4%	-0.5	3.6%	3.2%	0.3
2008	-2.2%	-1.4%	1.4%	-2.1	-6.7%	-5.4%	-1.0	-4.0%	-2.4%	-1.2
2009 YTD	-8.0%	-8.7%	-6.8%	-1.5	-16.1%	-14.4%	-1.3	-12.5%	-10.7%	-1.4

Percentage or Percentage Point Change

Note: 1. Data includes all 17 AAPA member airlines

2. Figures for January 2009 to June 2009 restated

3. AAPA consolidated traffic figures include Air New Zealand and Qantas Airways